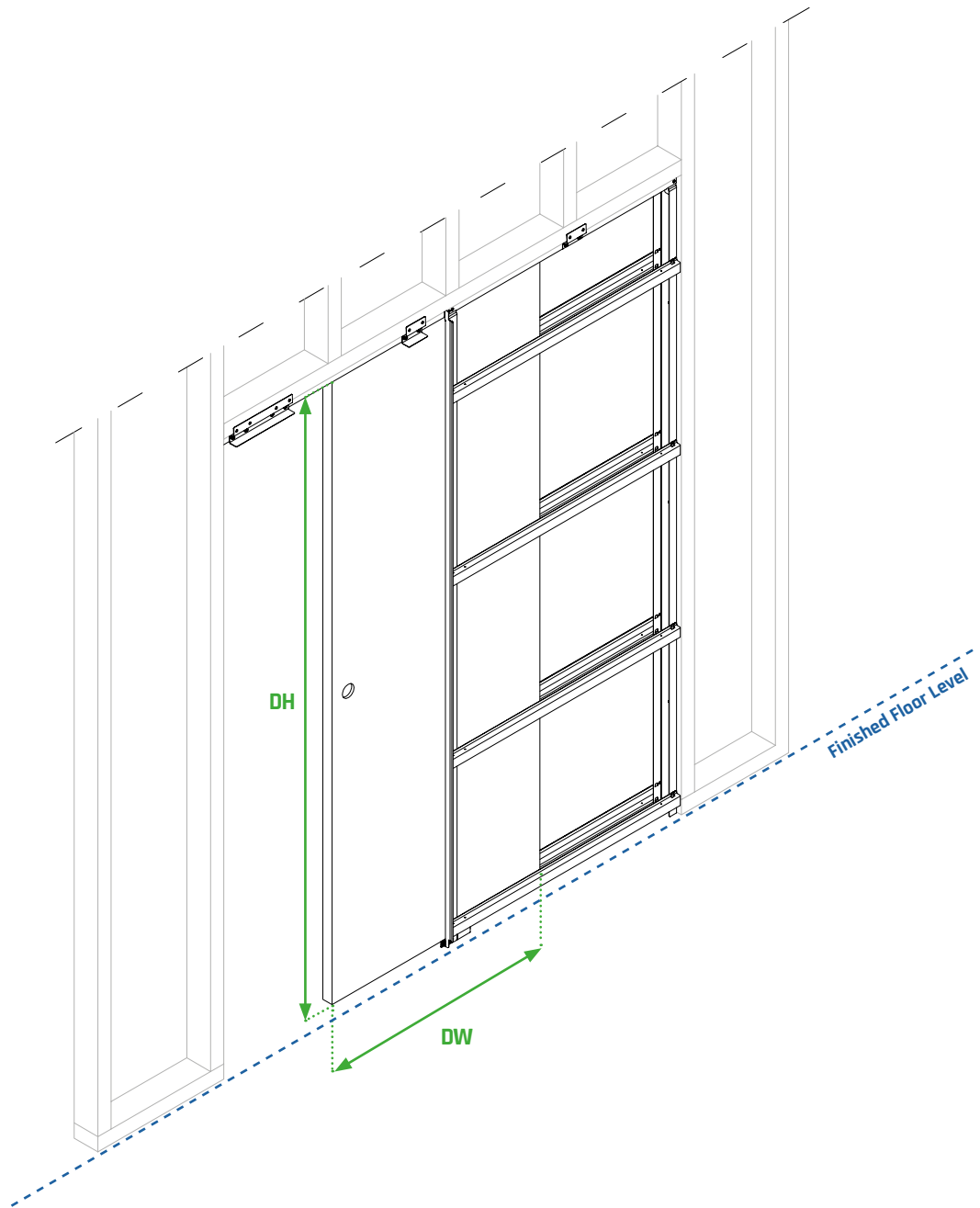


# Rocket Door Frames



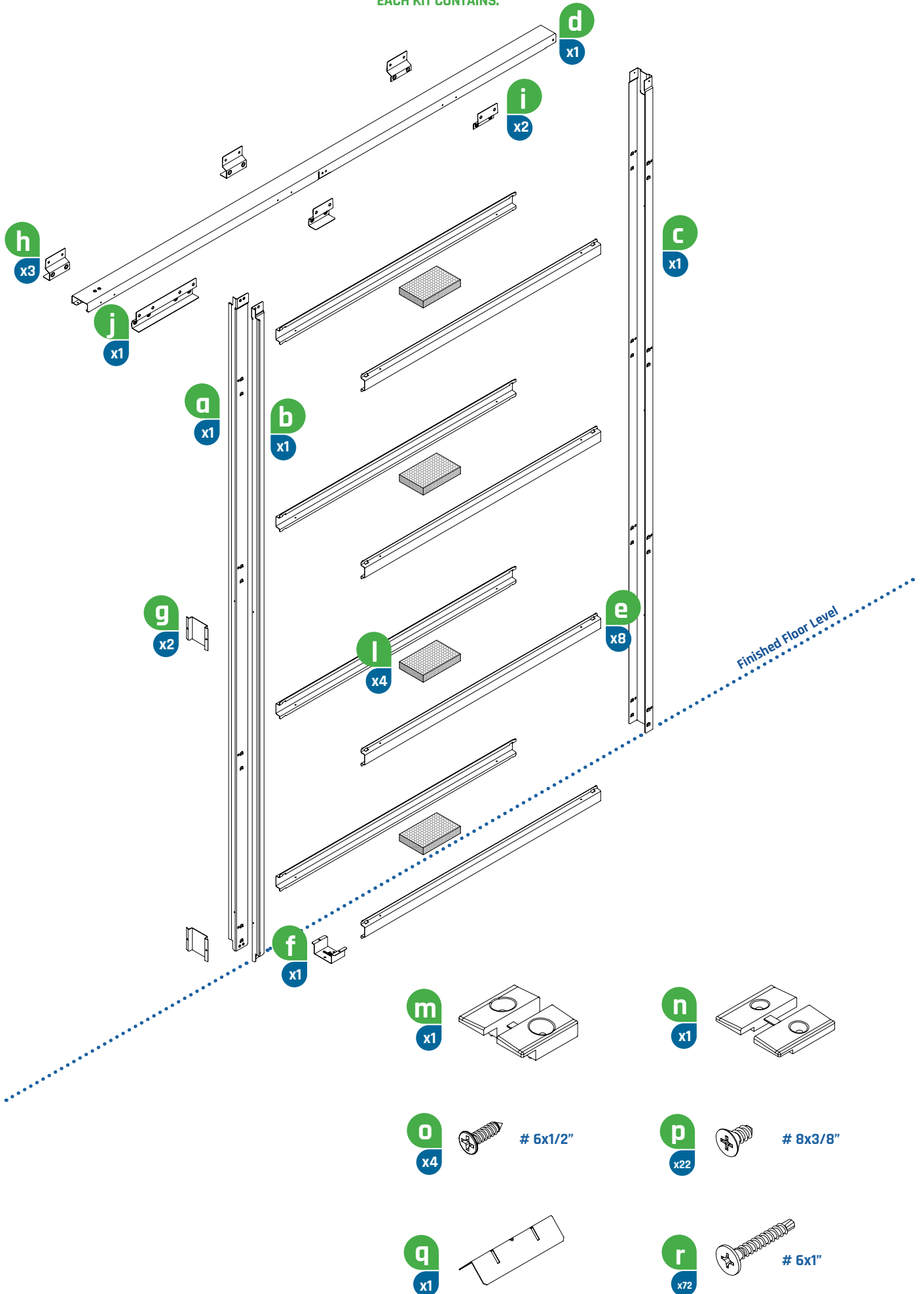
- Install at finished floor level.
- To obtain a sliding pocket door with two leaves it's necessary to join n°2 single door kits. (Page 8)
- See page 4 for stud dimensions

DOOR PANEL		STUD	OVERALL DIMENSIONS			
			SINGLE DOOR		DOUBLE DOOR	
DW	DH		W	H	W	H
28"	80"	2x4	56" 1/4	82" 7/8	112" 5/8	82" 7/8
30"	80"	2x4	60" 3/8	82" 7/8	120" 3/4	82" 7/8
32"	80"	2x4	64" 3/8	82" 7/8	128" 3/4	82" 7/8
34"	80"	2x4	68" 3/8	82" 7/8	136" 3/4	82" 7/8
Door Th. 1" 3/8, 1" 3/4						



# CONTENTS

EACH KIT CONTAINS:




# CONTENTS

EACH KIT CONTAINS:

- aa

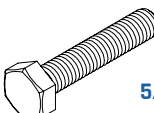
x2



5/16"

- bb

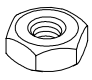
x2



5/16"x1"5/8

- cc

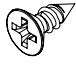
x2



5/16"

- dd

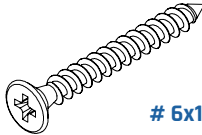
x2



# 6x3/8"

- ee

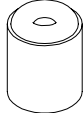
x8



# 6x1"

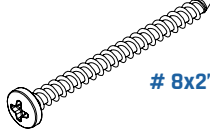
- ff

x1



- gg

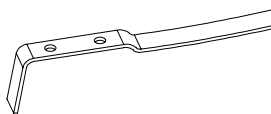
x1



# 8x2"

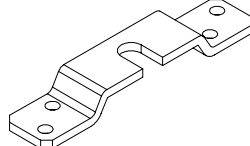
- hh

x1



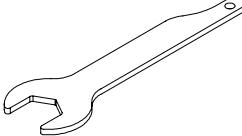
- ii

x2



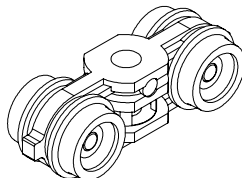
- ll

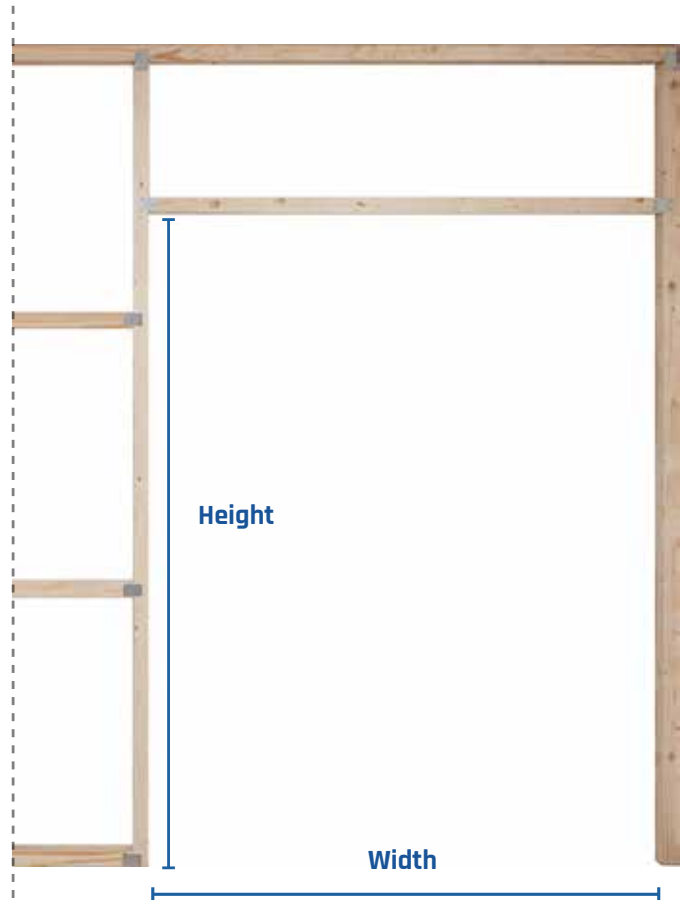
x2



- mm

x2





The Rocket Pocket kit will adapt to almost any stud dimension HOWEVER, the stud immediately above the frame must be 2x4. You can add layers of plasterboard to this to then obtain the wall thickness you require. Bare in mind the jamb dimensions will change accordingly (page 23).

DOOR PANEL		OVERALL DIMENSIONS			
		SINGLE DOOR		DOUBLE DOOR	
DW	DH	W	H	W	H
28"	80"	56" 1/4	82" 7/8	112" 5/8	82" 7/8
30"	80"	60" 3/8	82" 7/8	120" 3/4	82" 7/8
32"	80"	64" 3/8	82" 7/8	128" 3/4	82" 7/8
34"	80"	68" 3/8	82" 7/8	136" 3/4	82" 7/8
Door Th. 1" 3/8, 1" 3/4					

## CHOOSING THE DOOR GUIDE

FOR WOODEN DOORS ONLY

### DOOR THICKNESS



= 1" 3/8

= 1" 3/4

m

n

m1

m2

n1

n2

### FOR EXAMPLE 1" 3/8 THICK DOOR

b

a

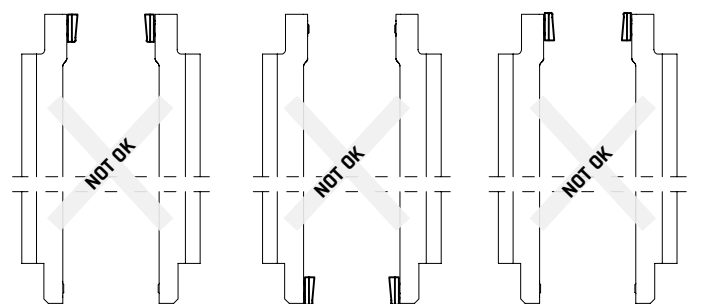
m2

0

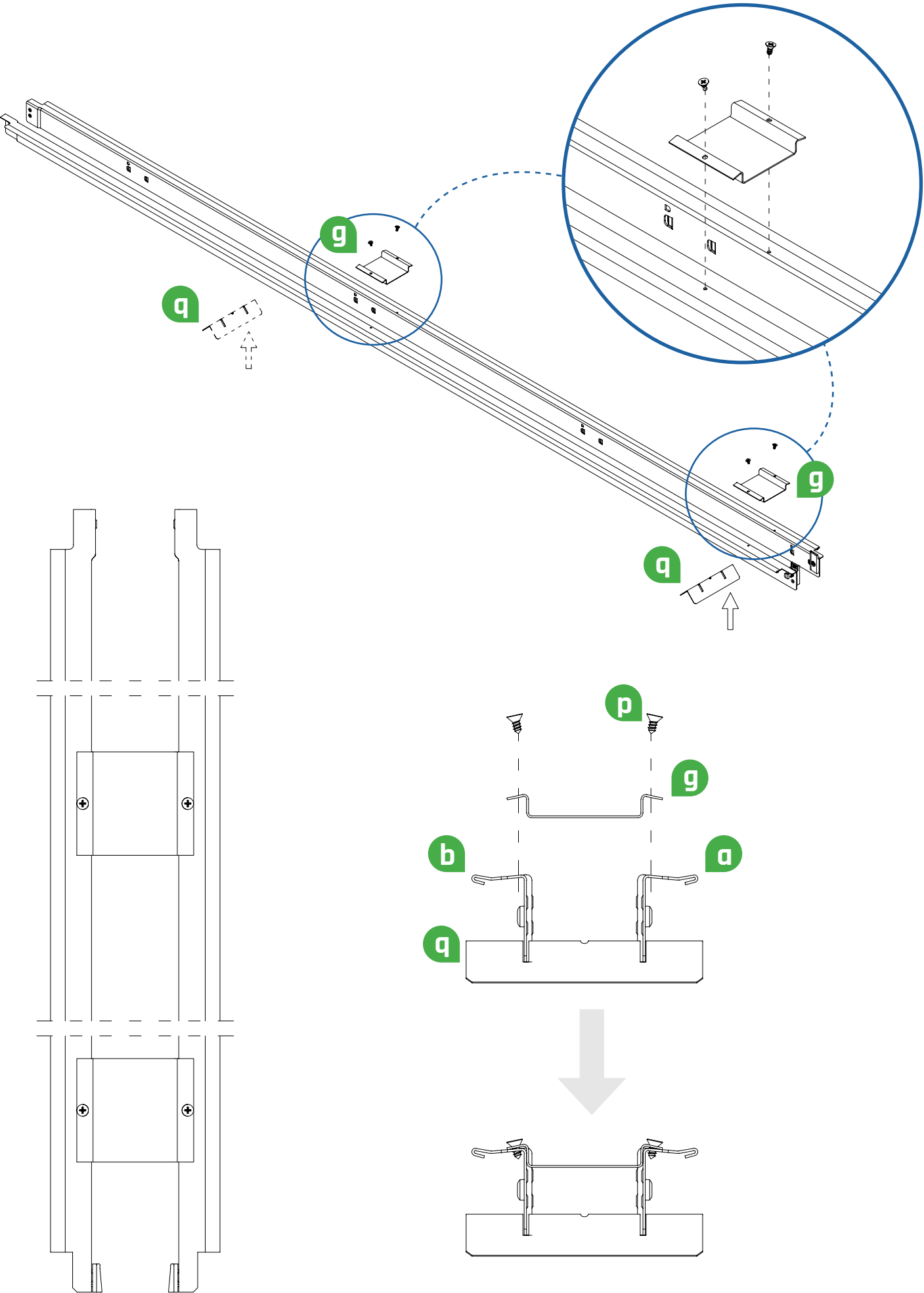
m1

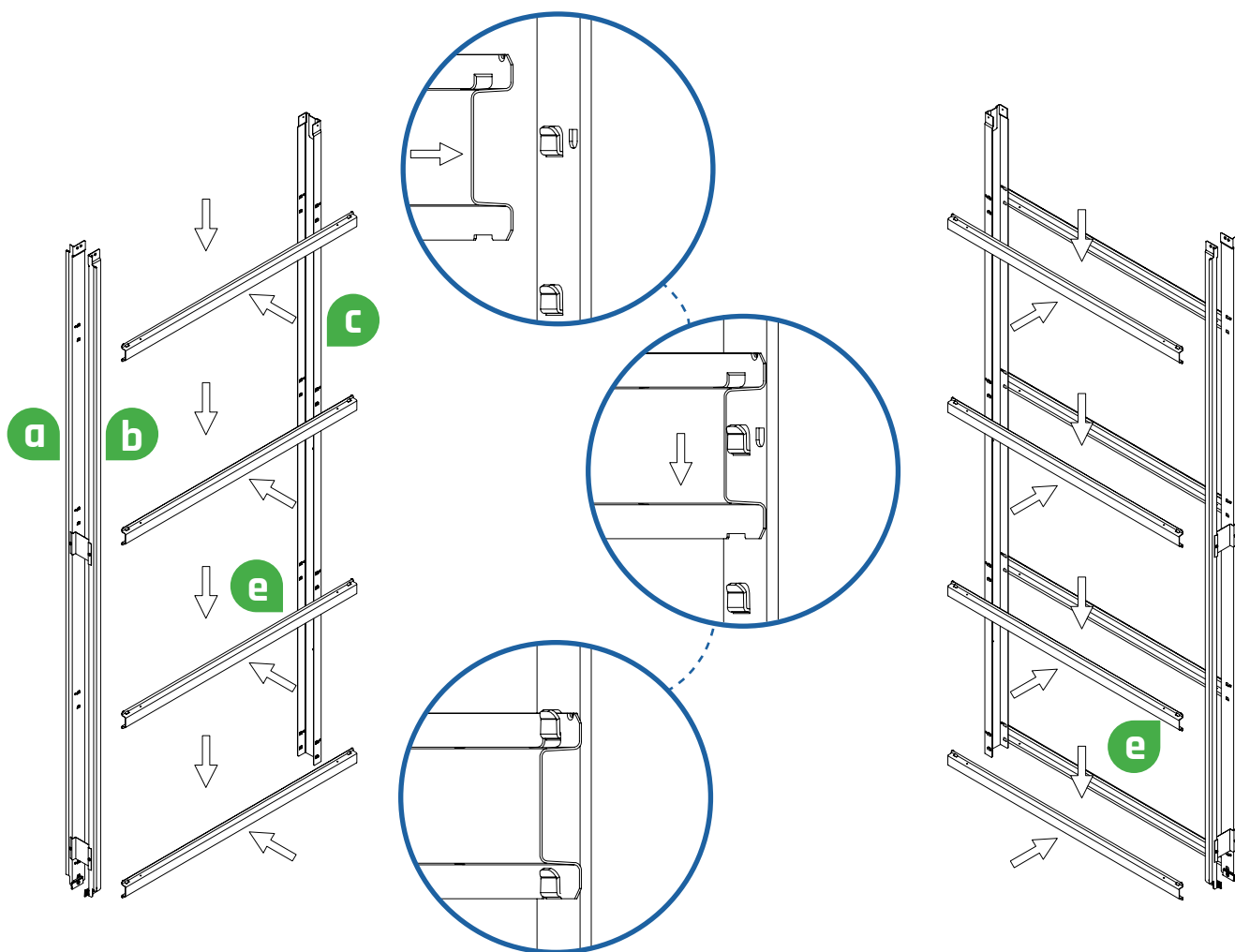
0

OK

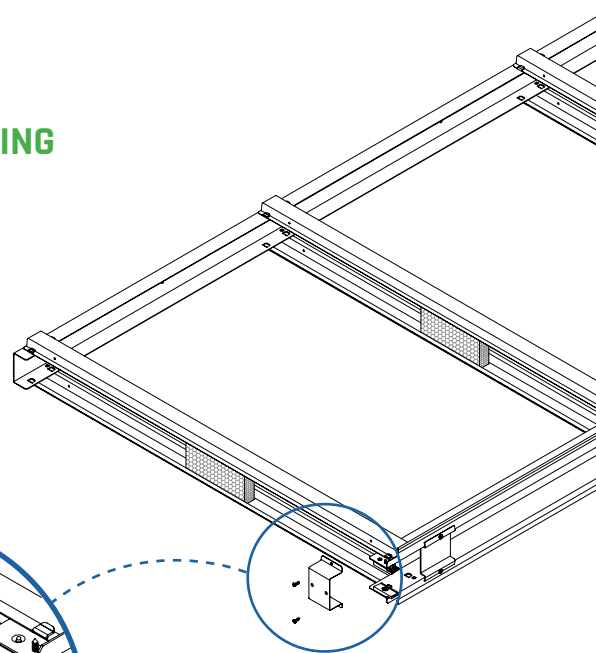


ATTACHING THE BRACKETS

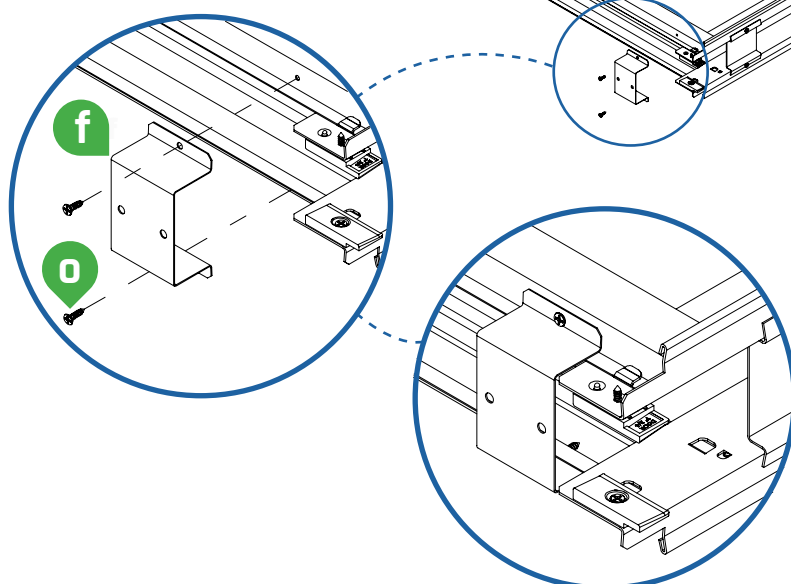
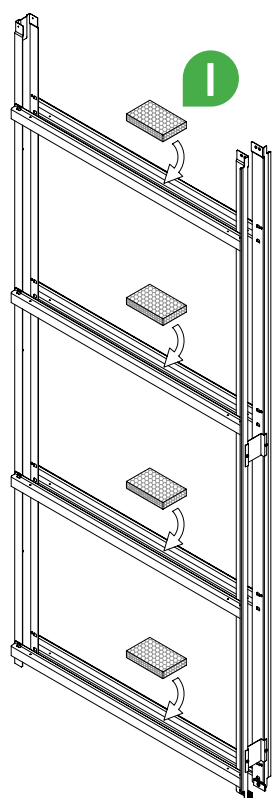




## FRAME ASSEMBLING

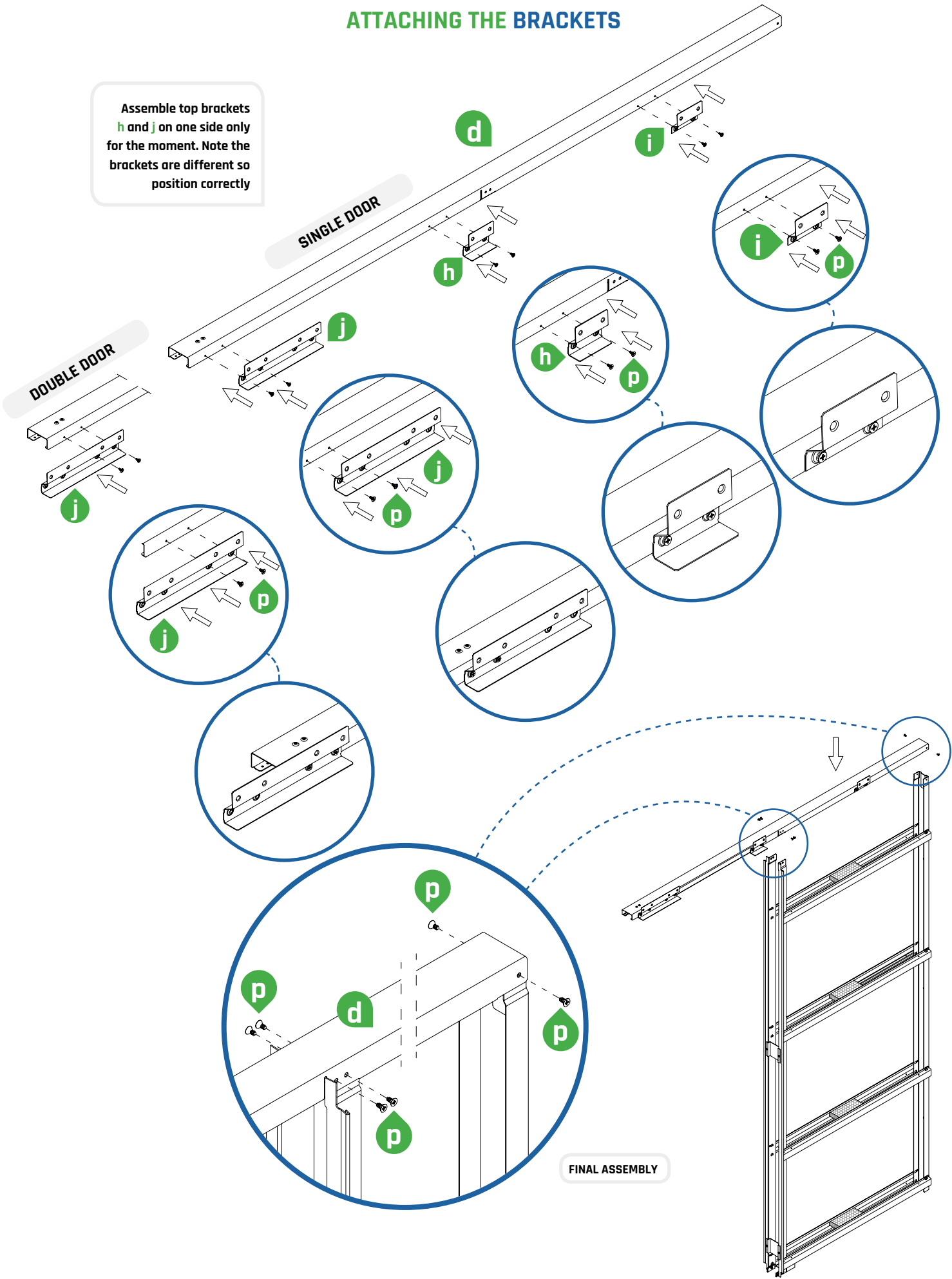


Insert  
polystyrene  
spacers



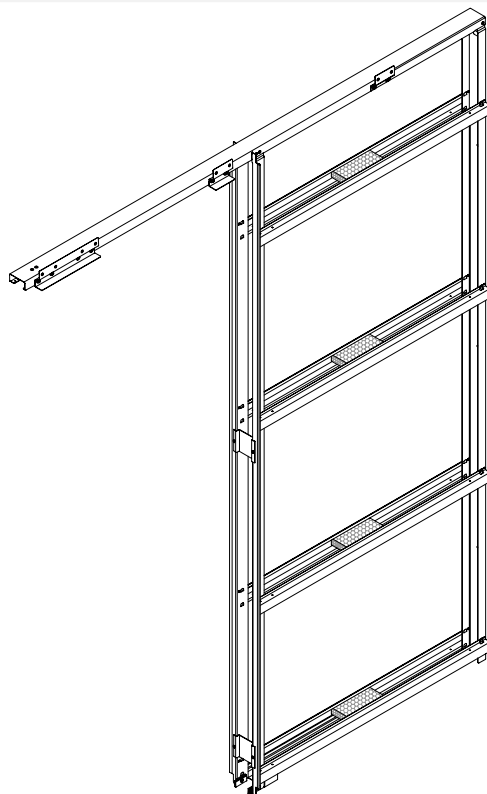
# ATTACHING THE BRACKETS

Assemble top brackets **h** and **j** on one side only for the moment. Note the brackets are different so position correctly

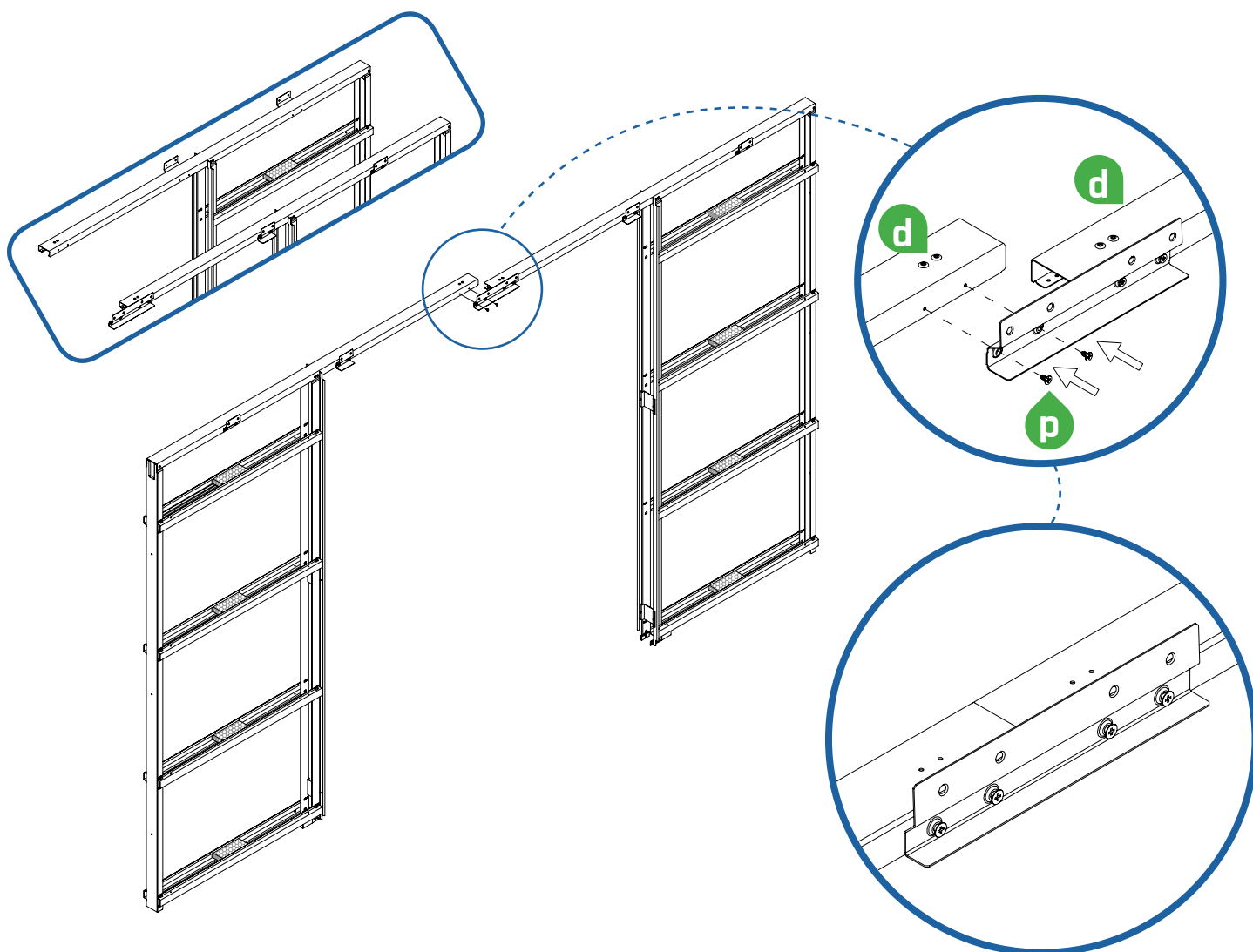




## SINGLE DOOR

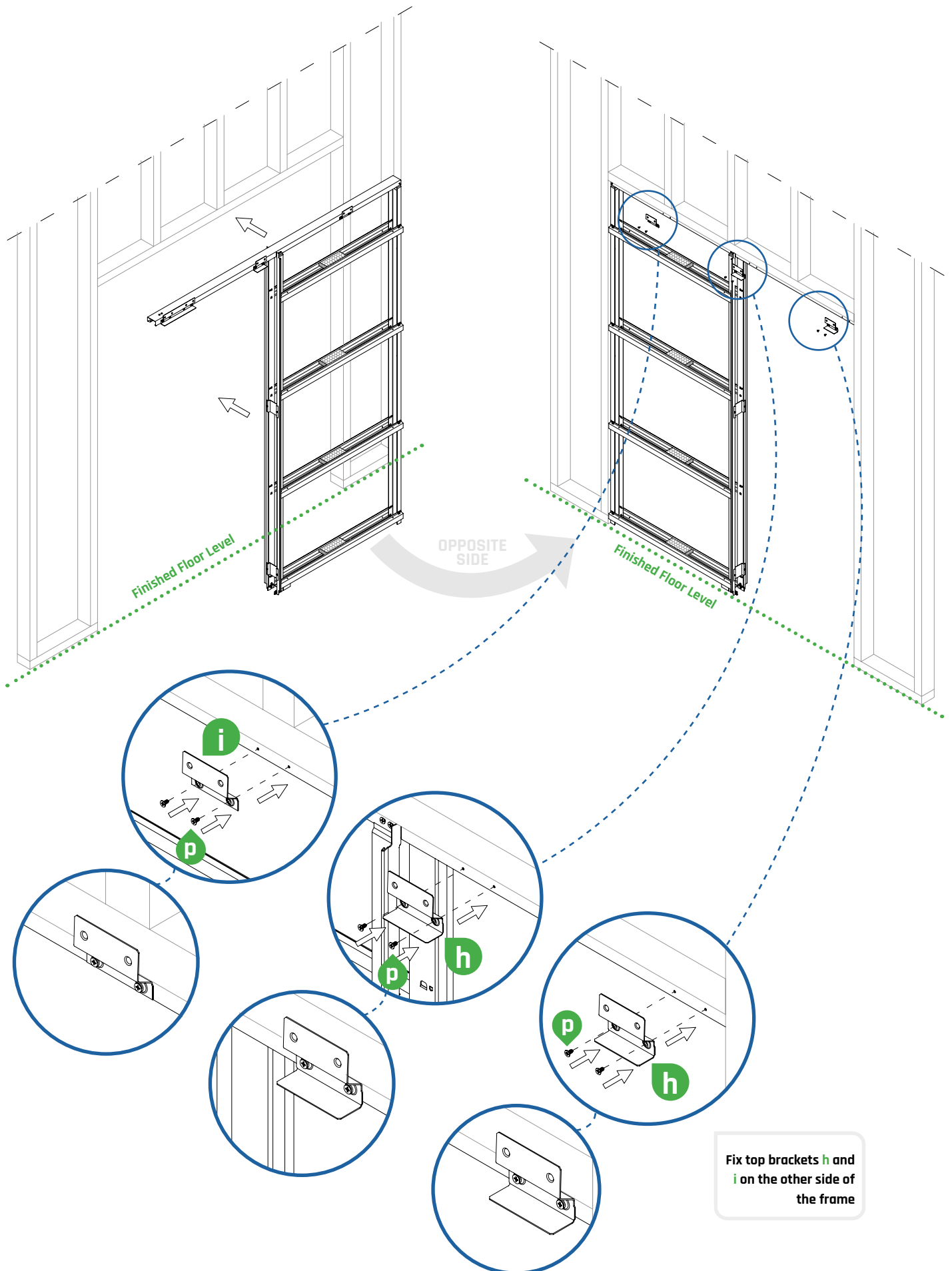


## DOUBLE DOOR



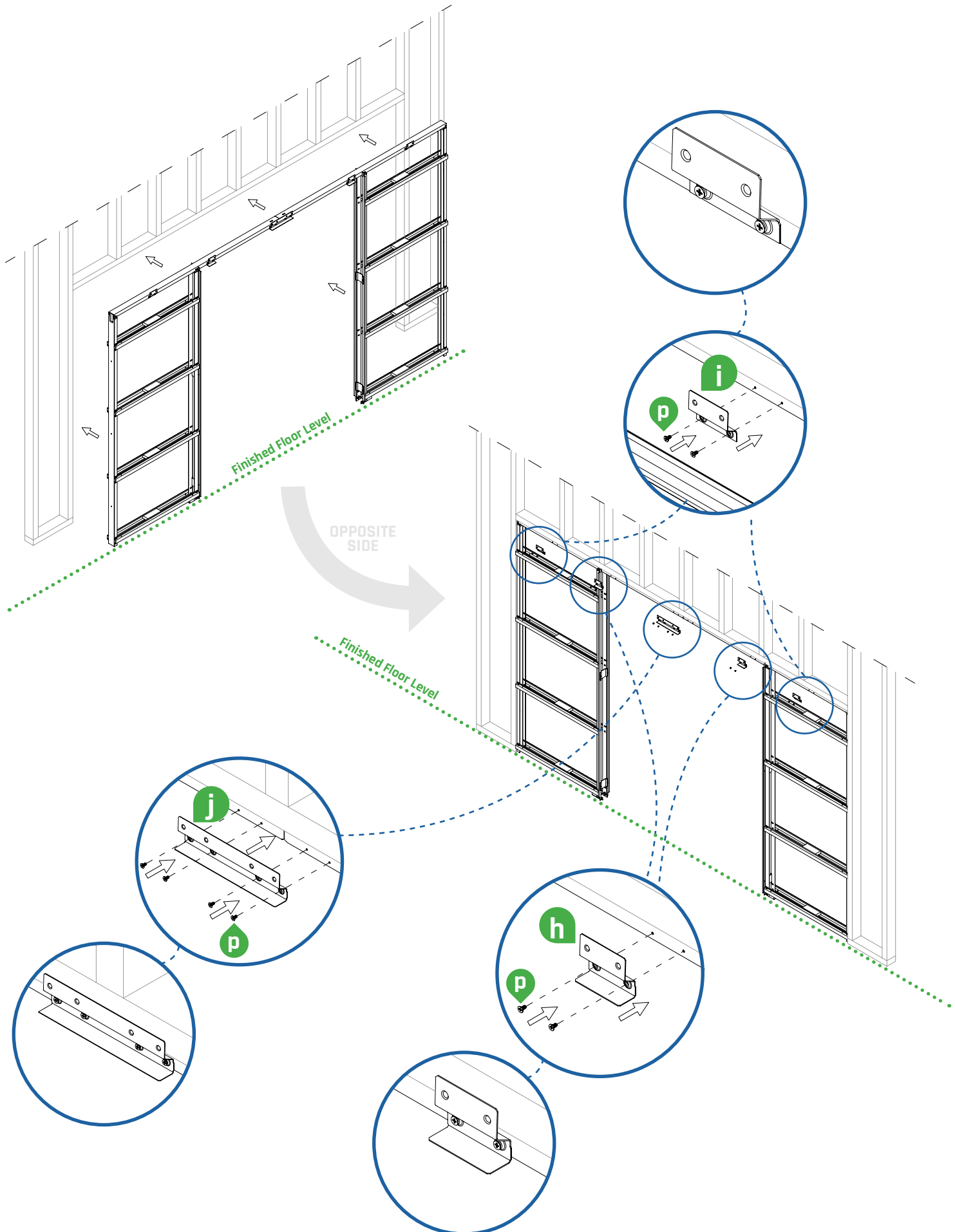
## INSTALLING IN STUDWORK

### SINGLE DOOR



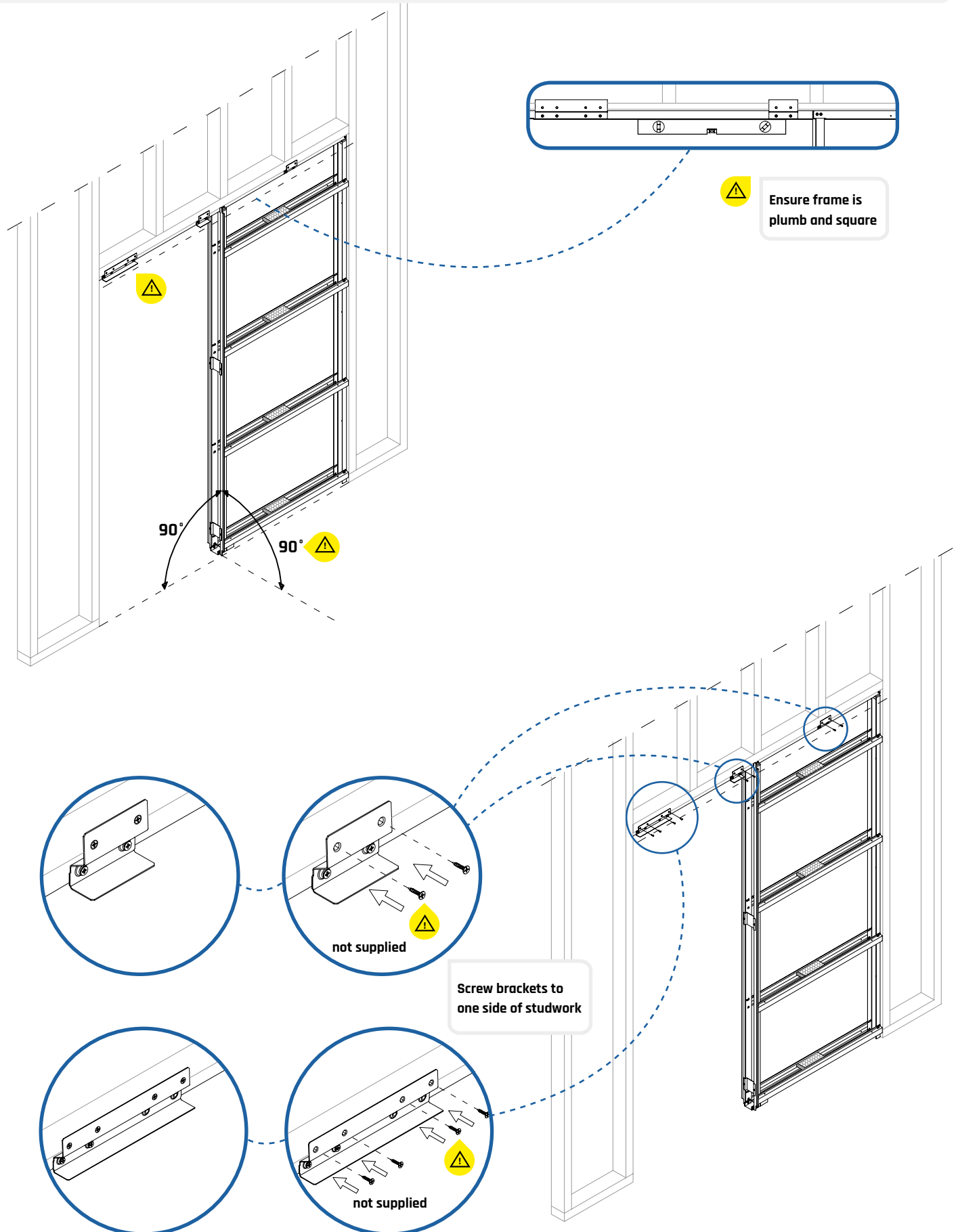
## INSTALLING IN STUDWORK

### DOUBLE DOOR



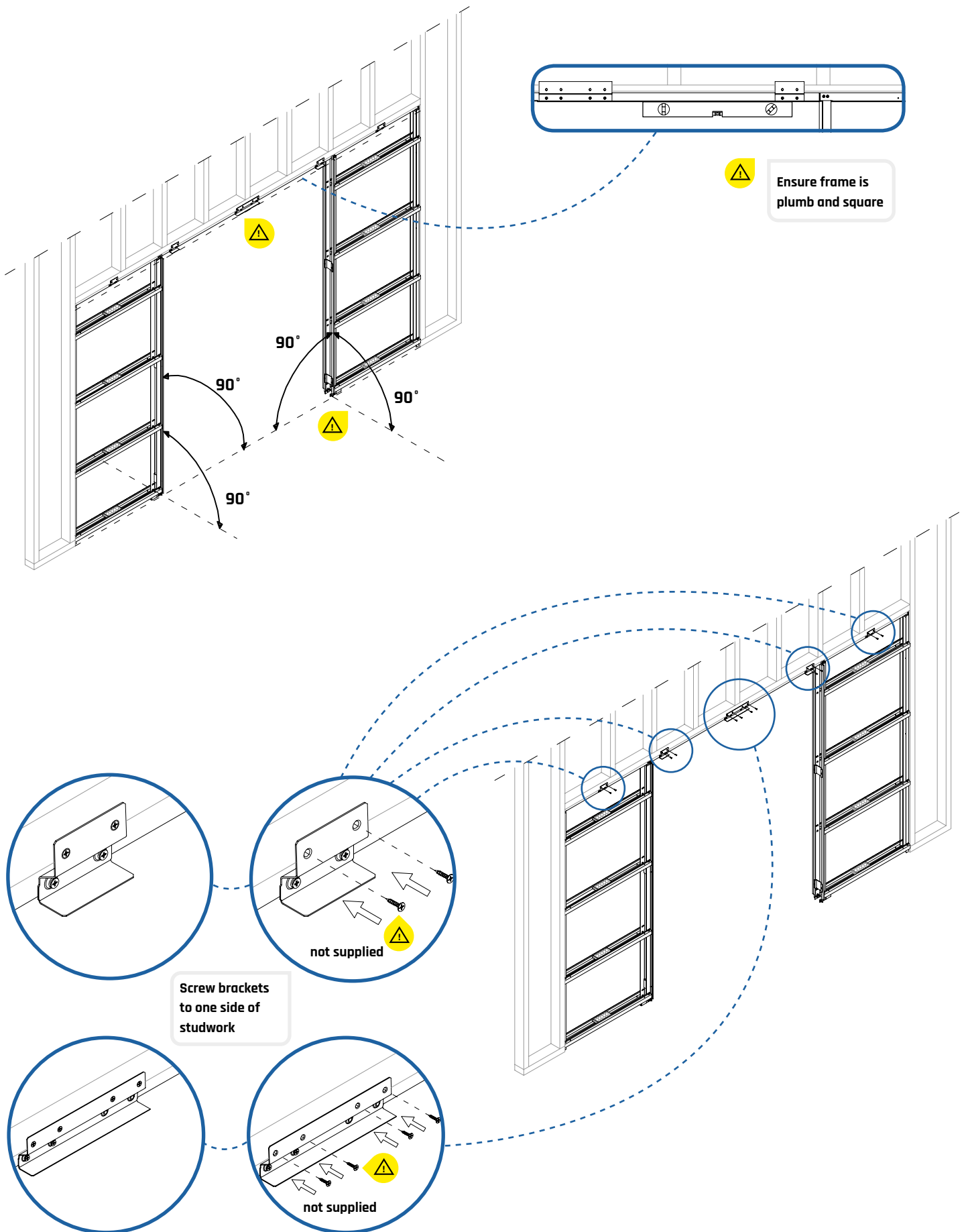
## INSTALLING IN STUDWORK

### SINGLE DOOR



## INSTALLING IN STUDWORK

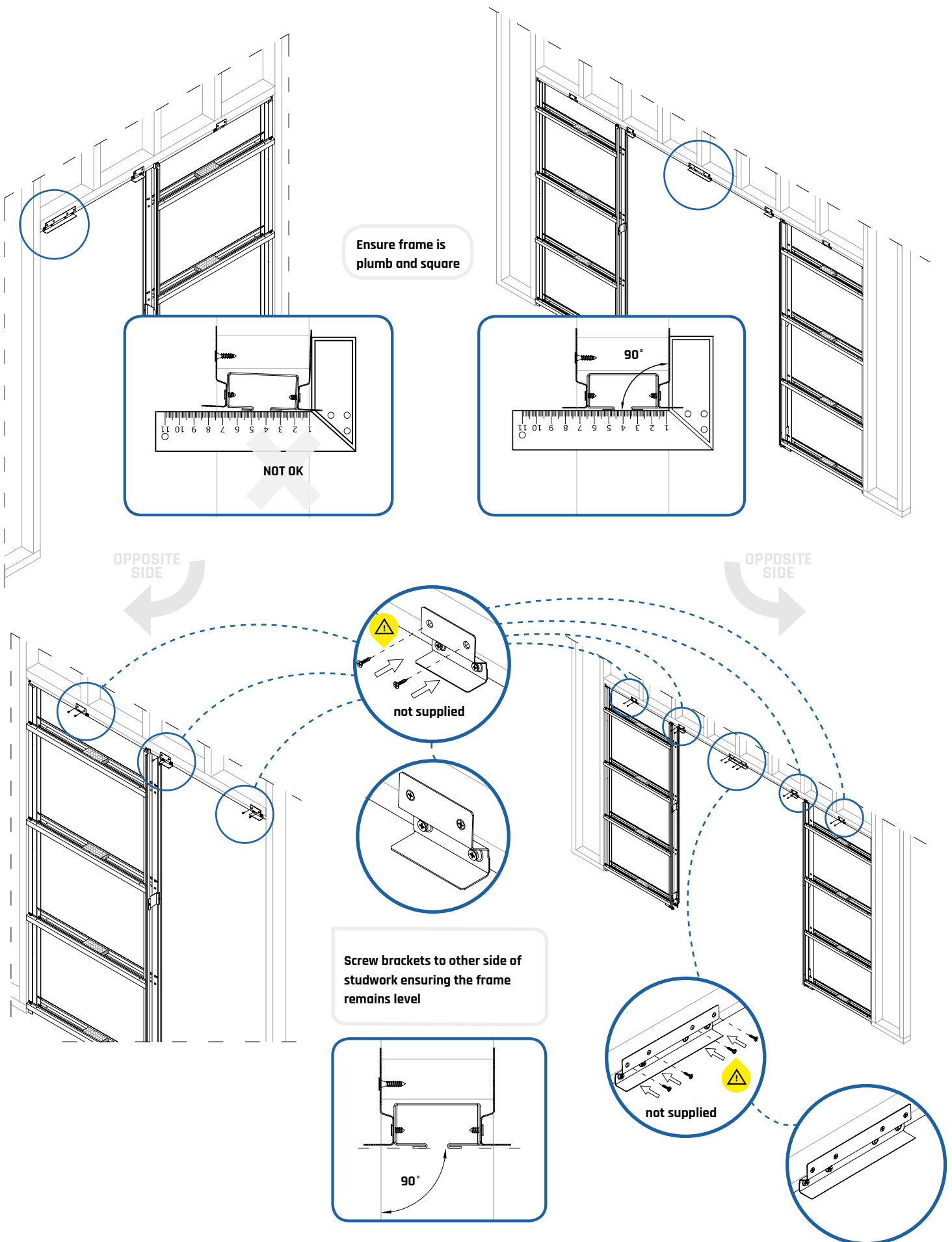
### DOUBLE DOOR



## INSTALLING IN STUDWORK

### SINGLE DOOR

### DOUBLE DOOR

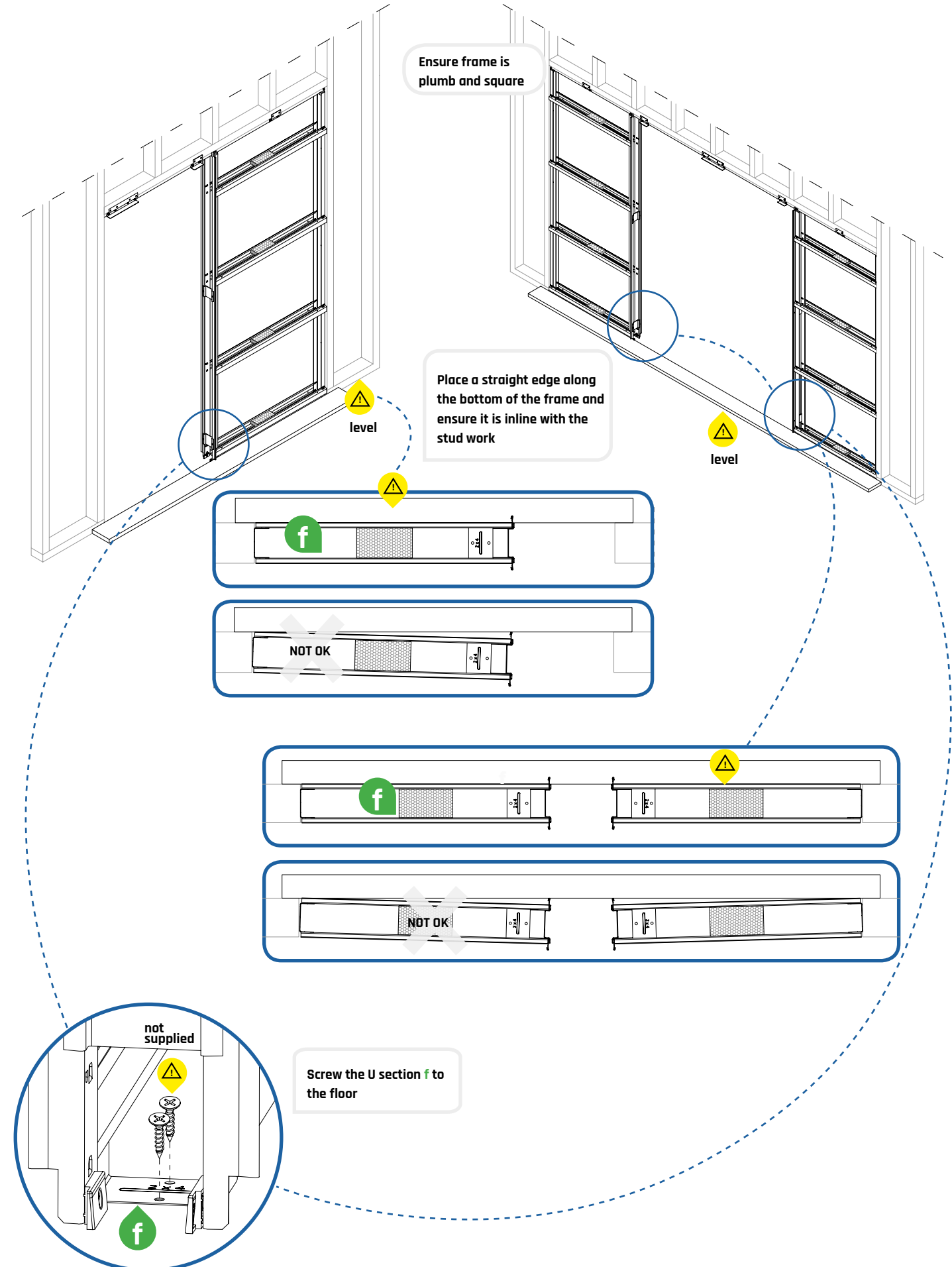


SINGLE DOOR

DOUBLE DOOR

### SINGLE DOOR

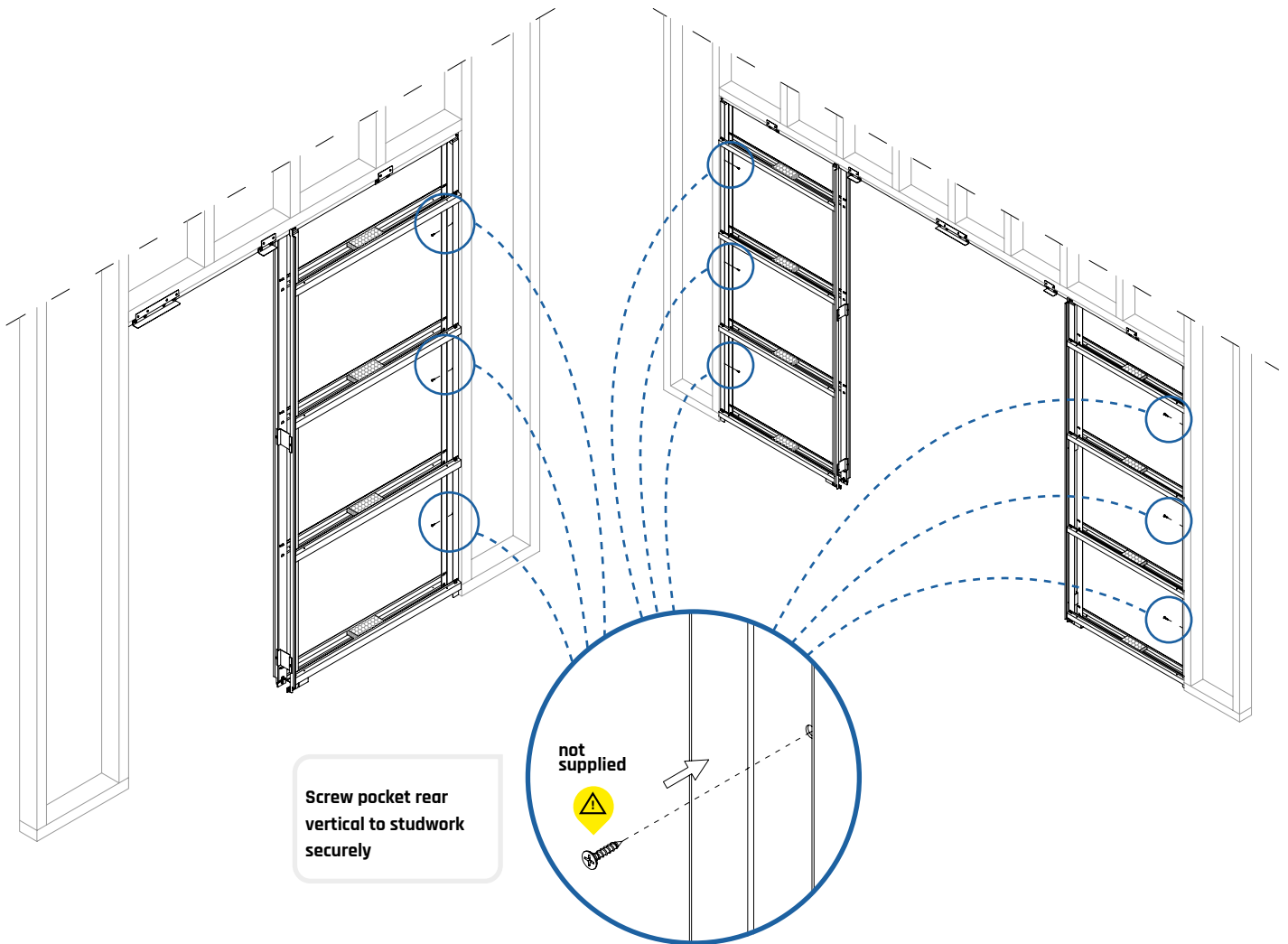
**DOUBLE DOOR**



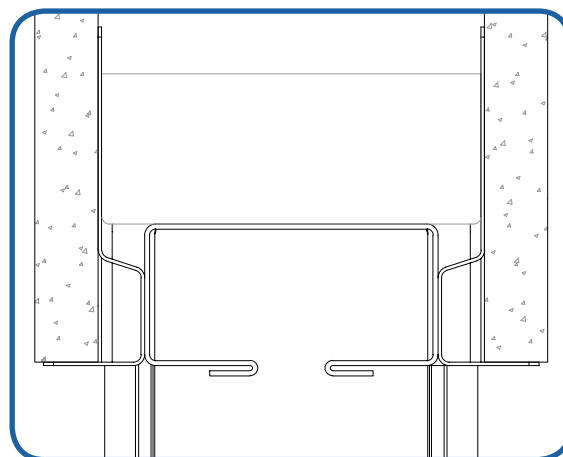
## SCREWING THE REAR VERTICAL TO THE STUDWORK

### SINGLE DOOR

### DOUBLE DOOR



x2

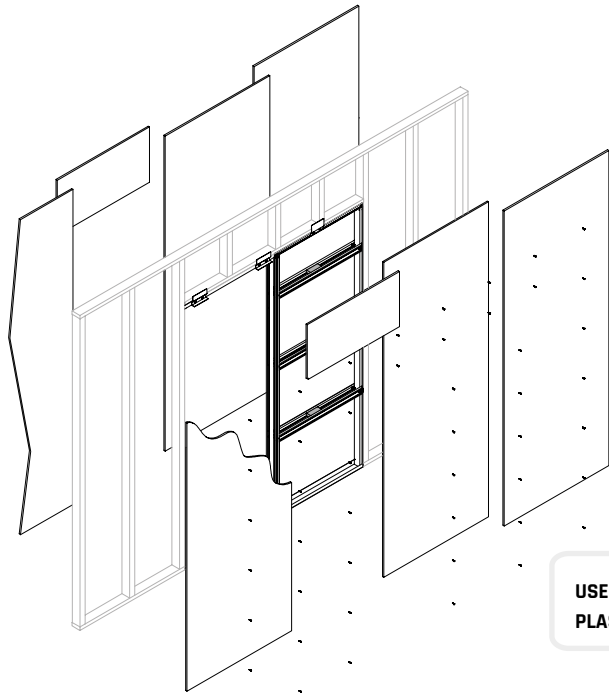


CAREFULLY CLEAN  
THE TRACK TWICE



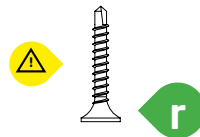
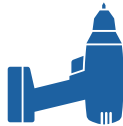
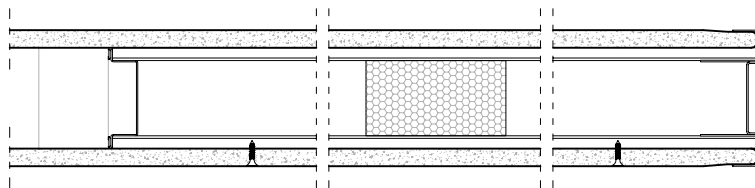
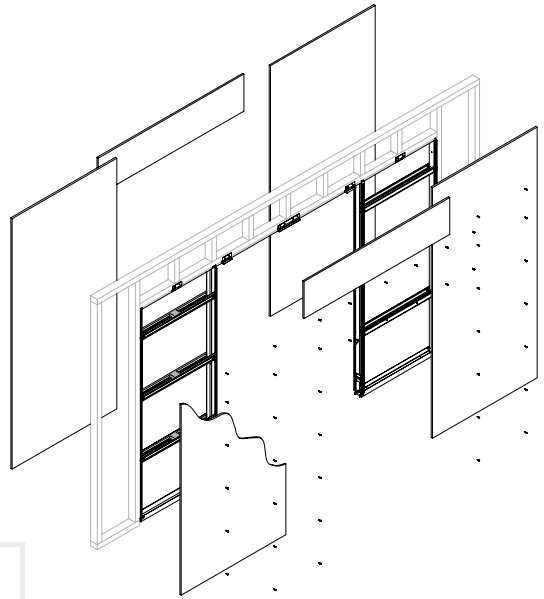
## FIXING THE PLASTERBOARD

### SINGLE DOOR

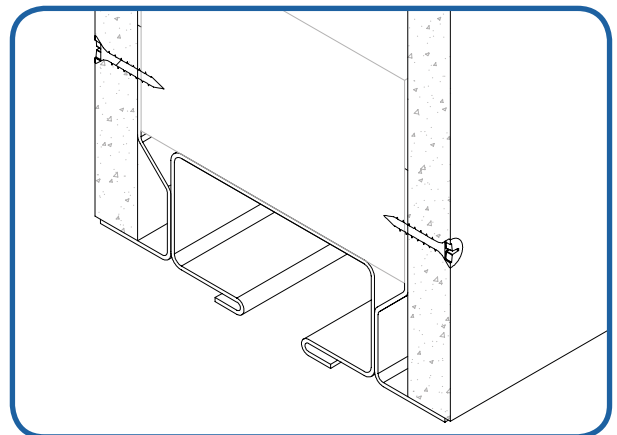
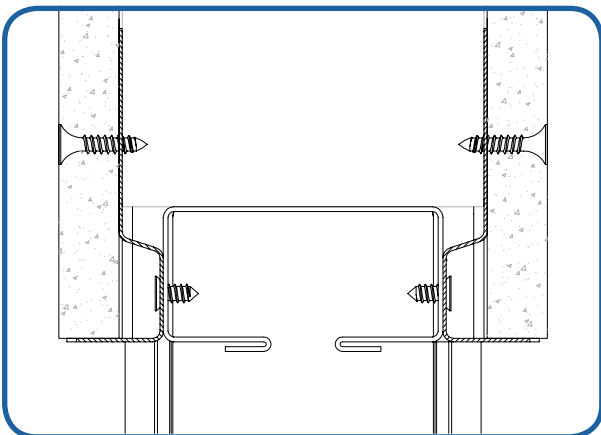


USE 1/2" (12.5 mm)  
PLASTERBOARD

### DOUBLE DOOR



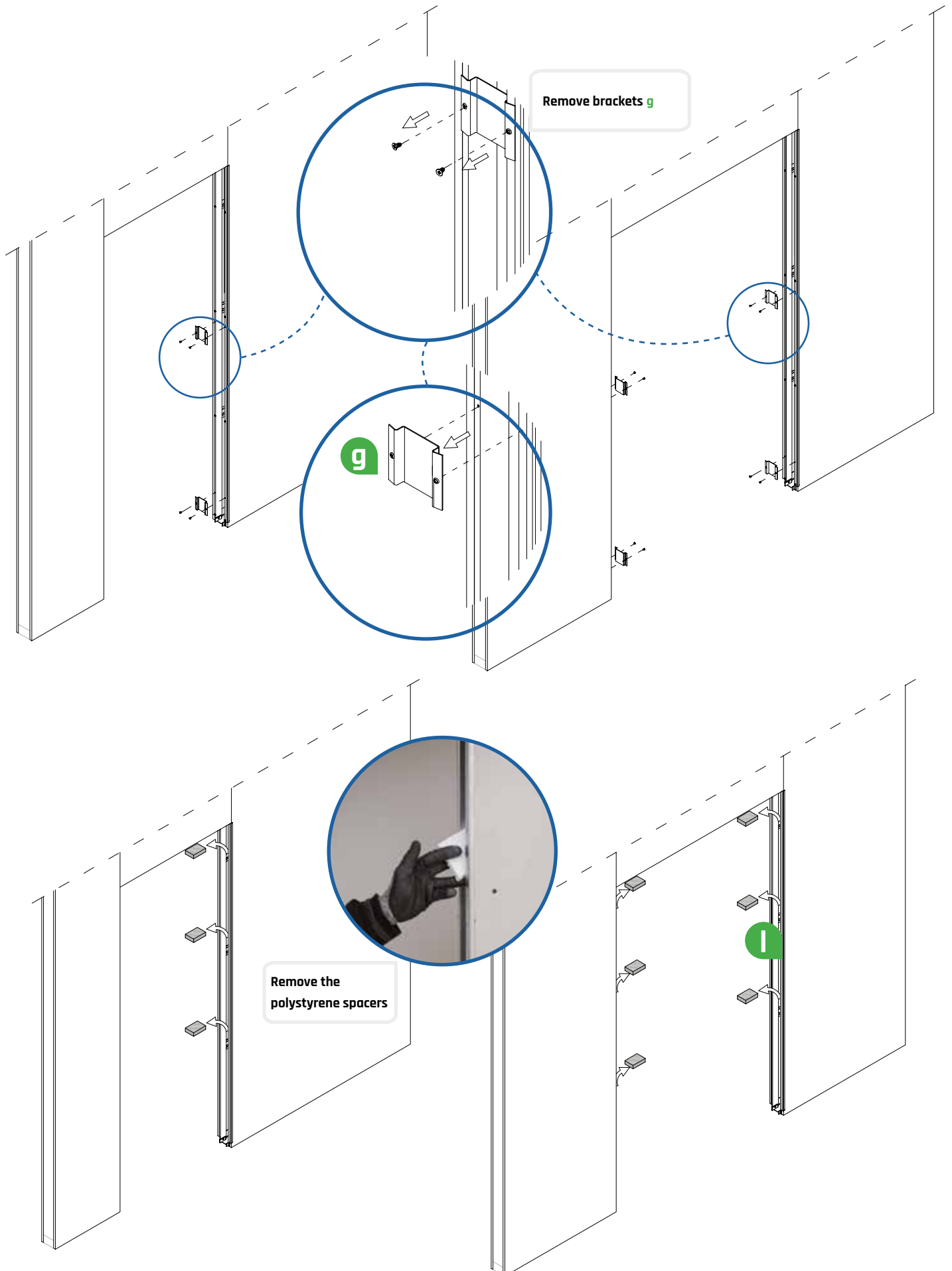
Use supplied 1"  
(19 mm) screws



## REMOVING BRACKETS AND SPACERS

### SINGLE DOOR

### DOUBLE DOOR



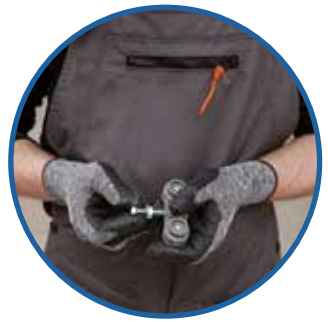
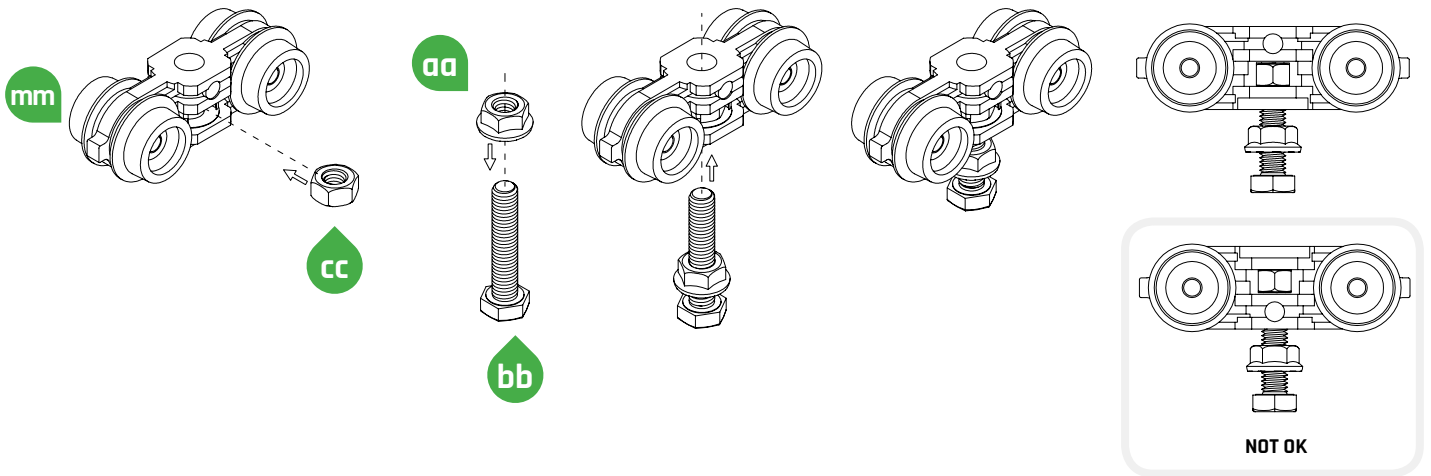
## RUNNERS ASSEMBLING

x2

SINGLE DOOR

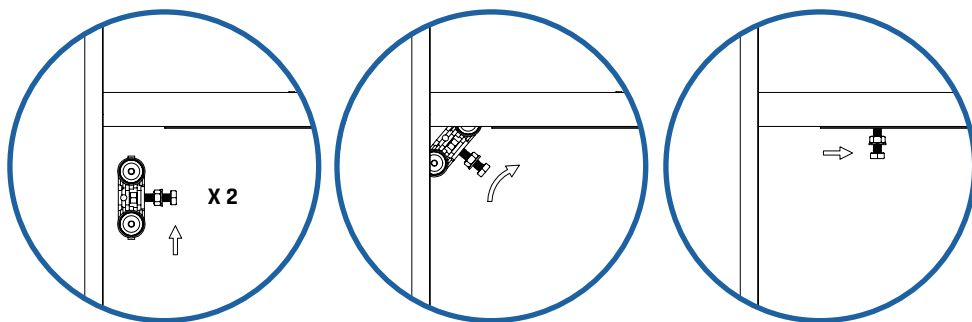
x4

DOUBLE DOOR

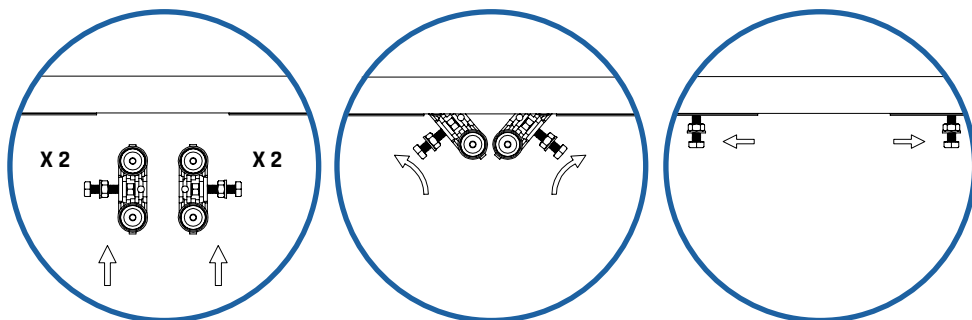


## INSERT RUNNERS INTO TRACK

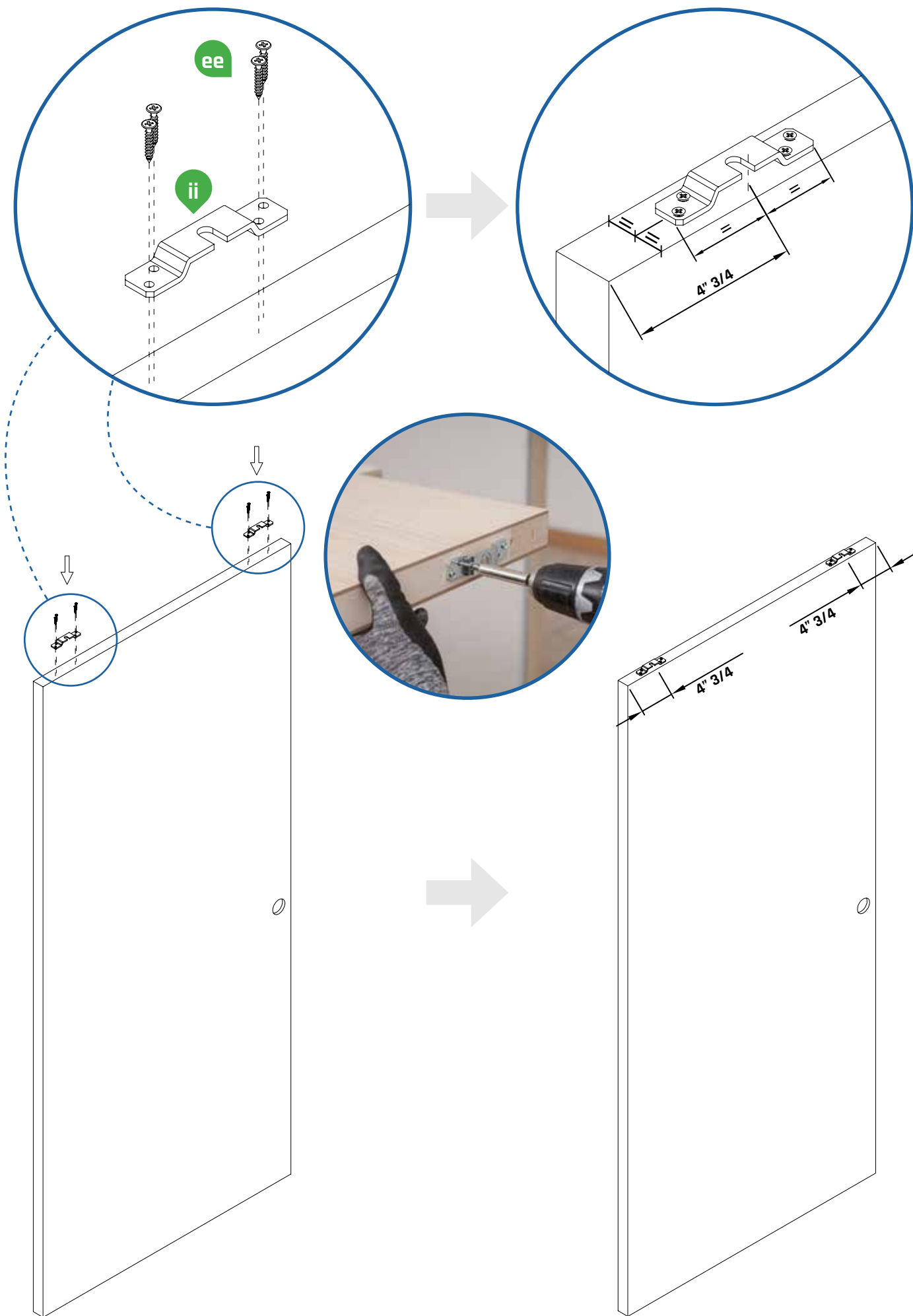
SINGLE DOOR



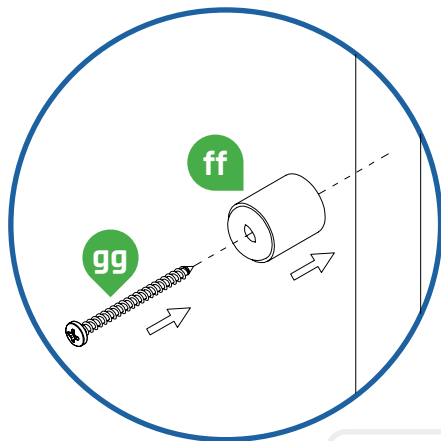
DOUBLE DOOR



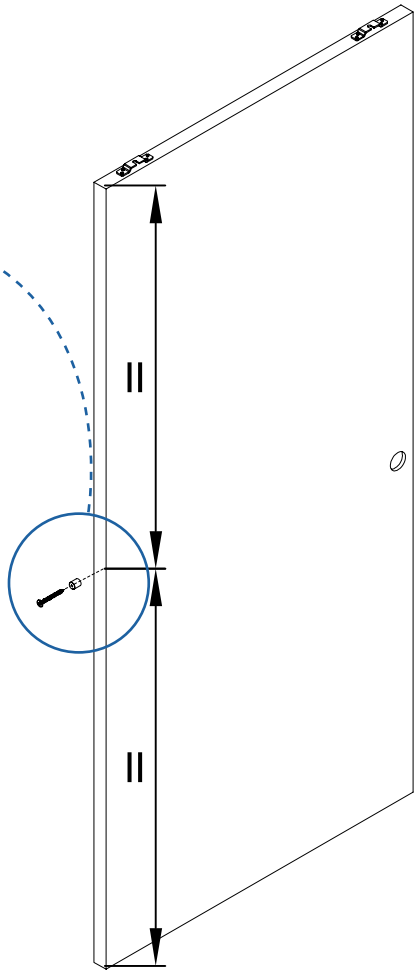
INSTALLING DOOR BRACKETS



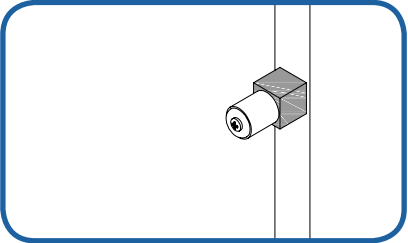
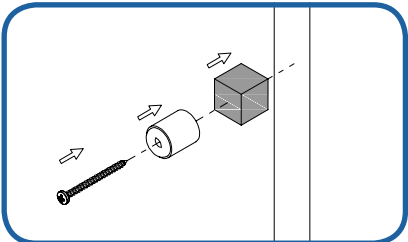
# INSTALLING REAR DOOR BUMPER



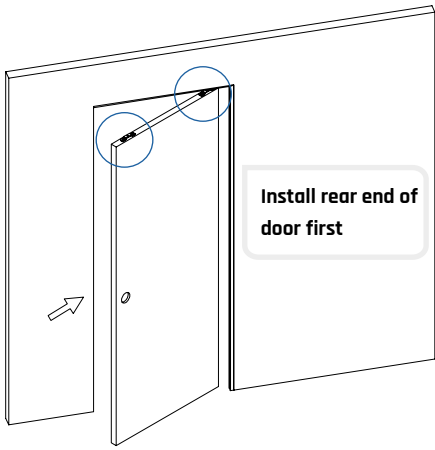
Screw in front doorstop using supplied screws and pre drilled holes.



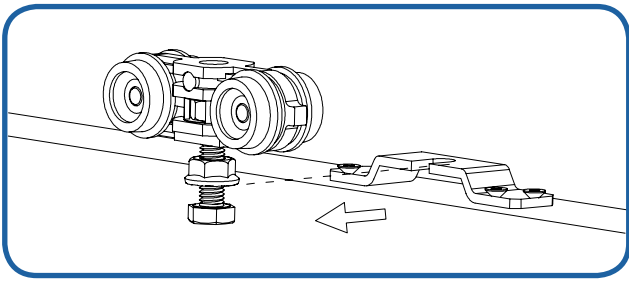
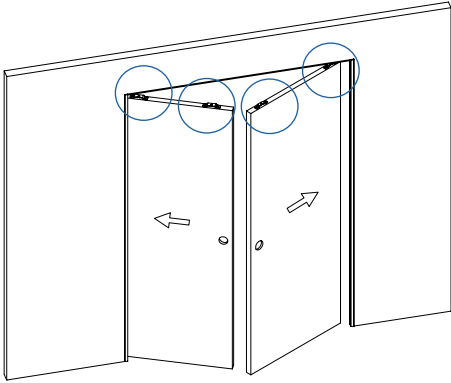
If you wish to adjust the door to protrude from the pocket when fully open, you need to add a distance piece between the rear of the door and the rubber bumper. We recommend this when using flush pulls to eliminate the risk of trapped fingers.



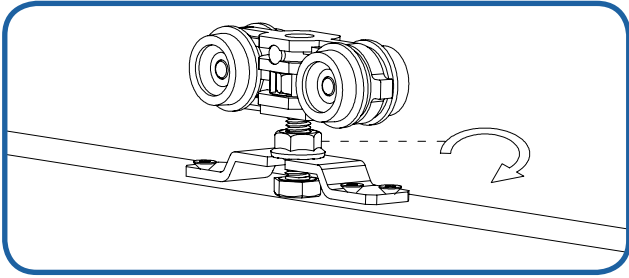
# INSTALLING DOOR PANEL



Install rear end of door first

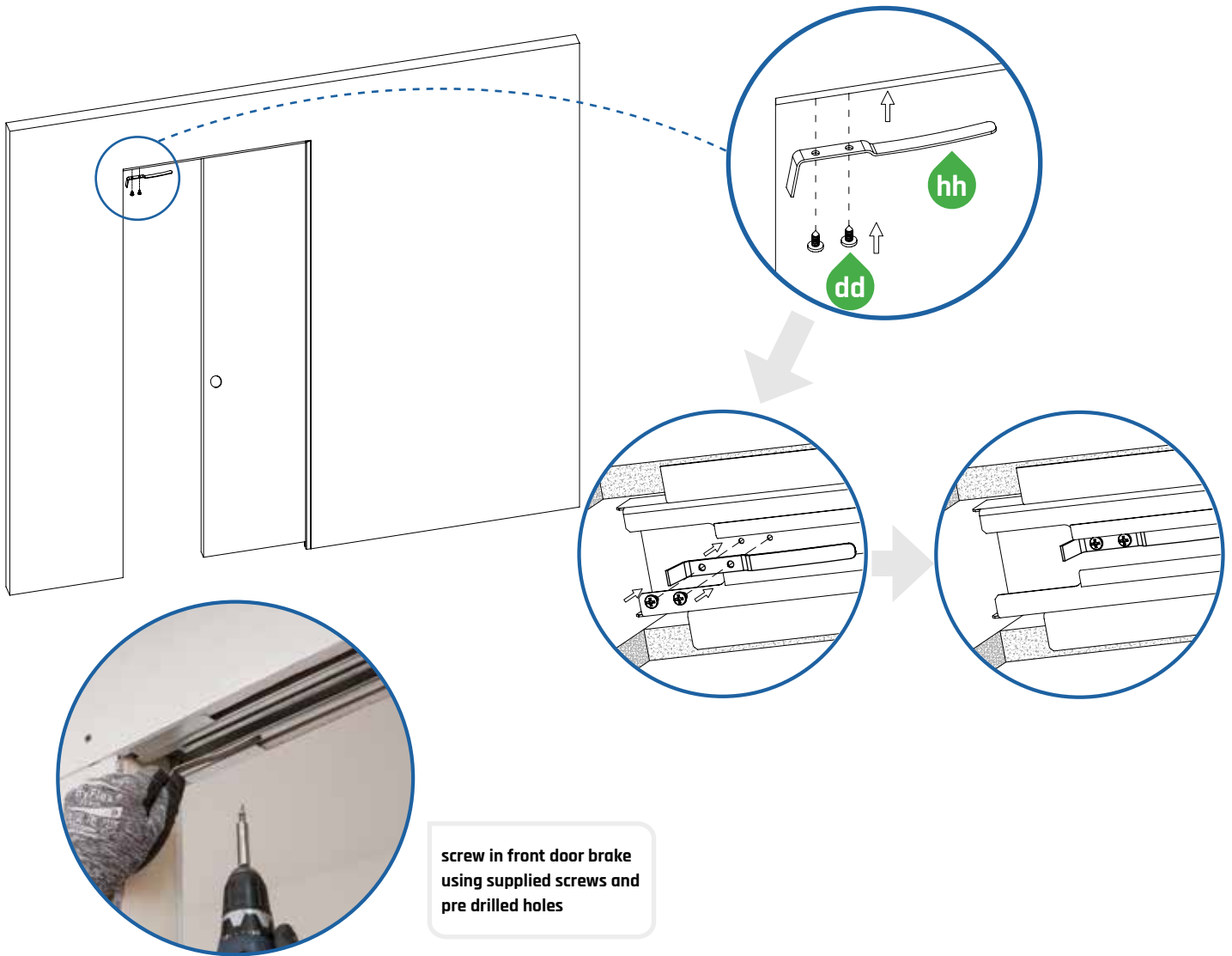


Adjust door height to be 1/4" (7 mm) above the floor and lock into position with by tightening lock nut.

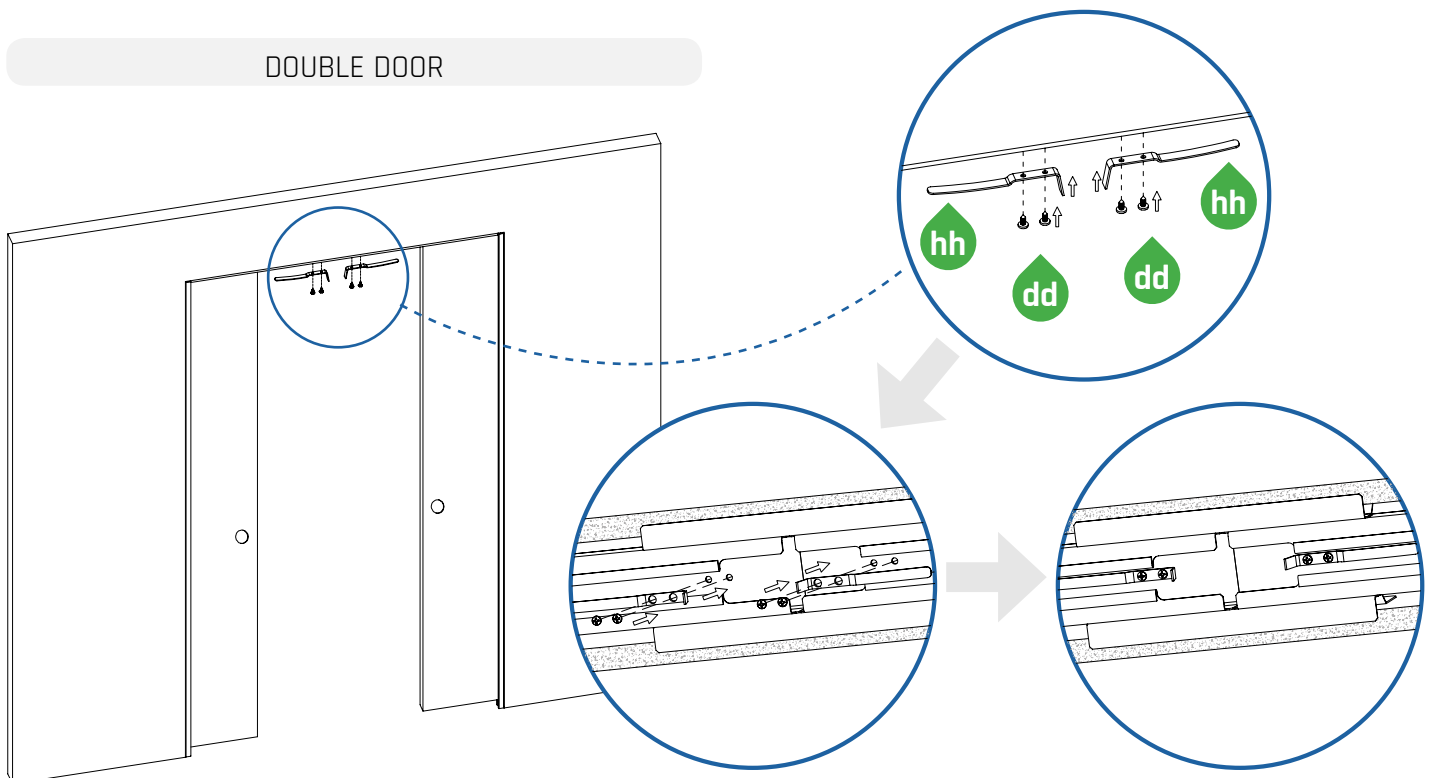


## INSTALLING DOOR BRAKE

### SINGLE DOOR



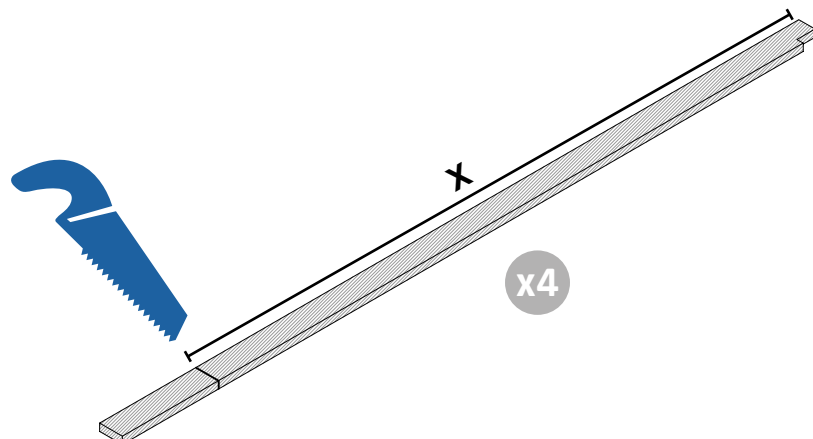
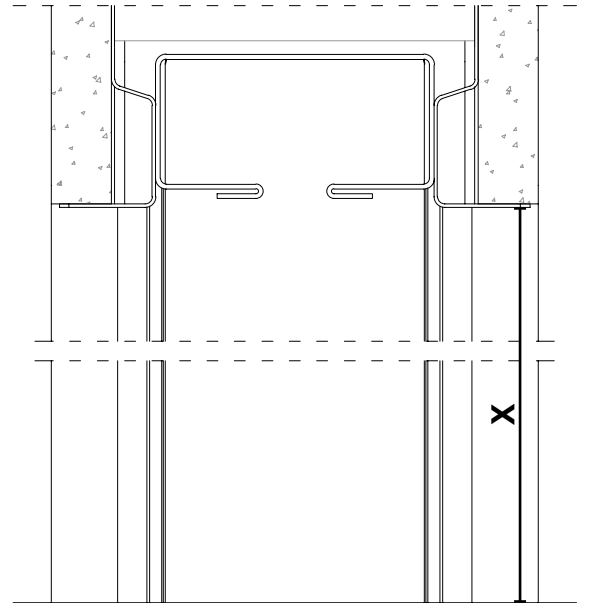
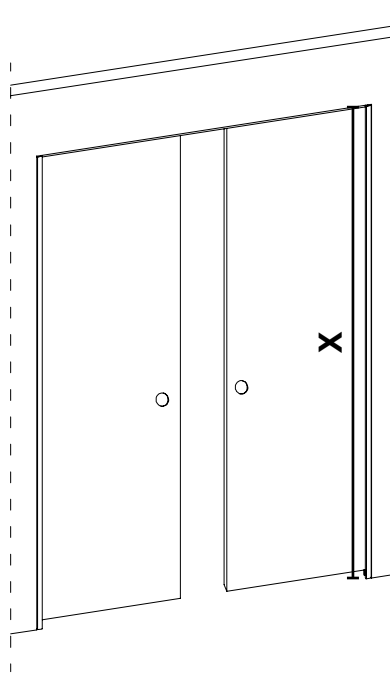
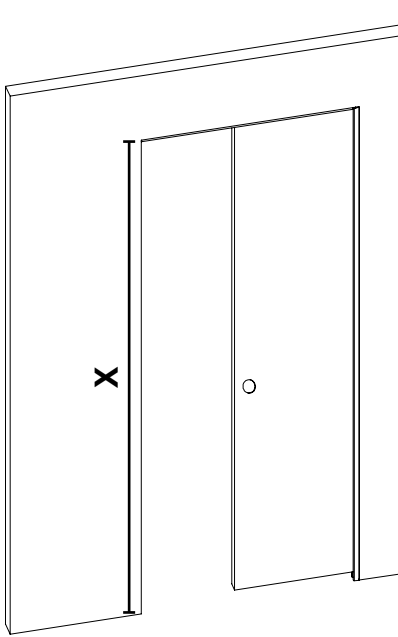
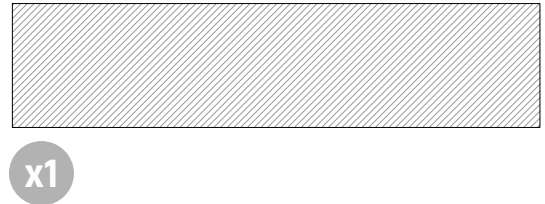
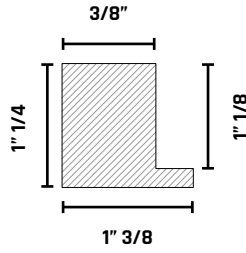
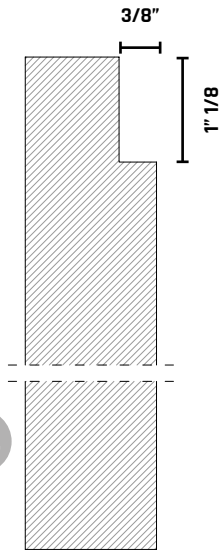
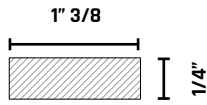
### DOUBLE DOOR



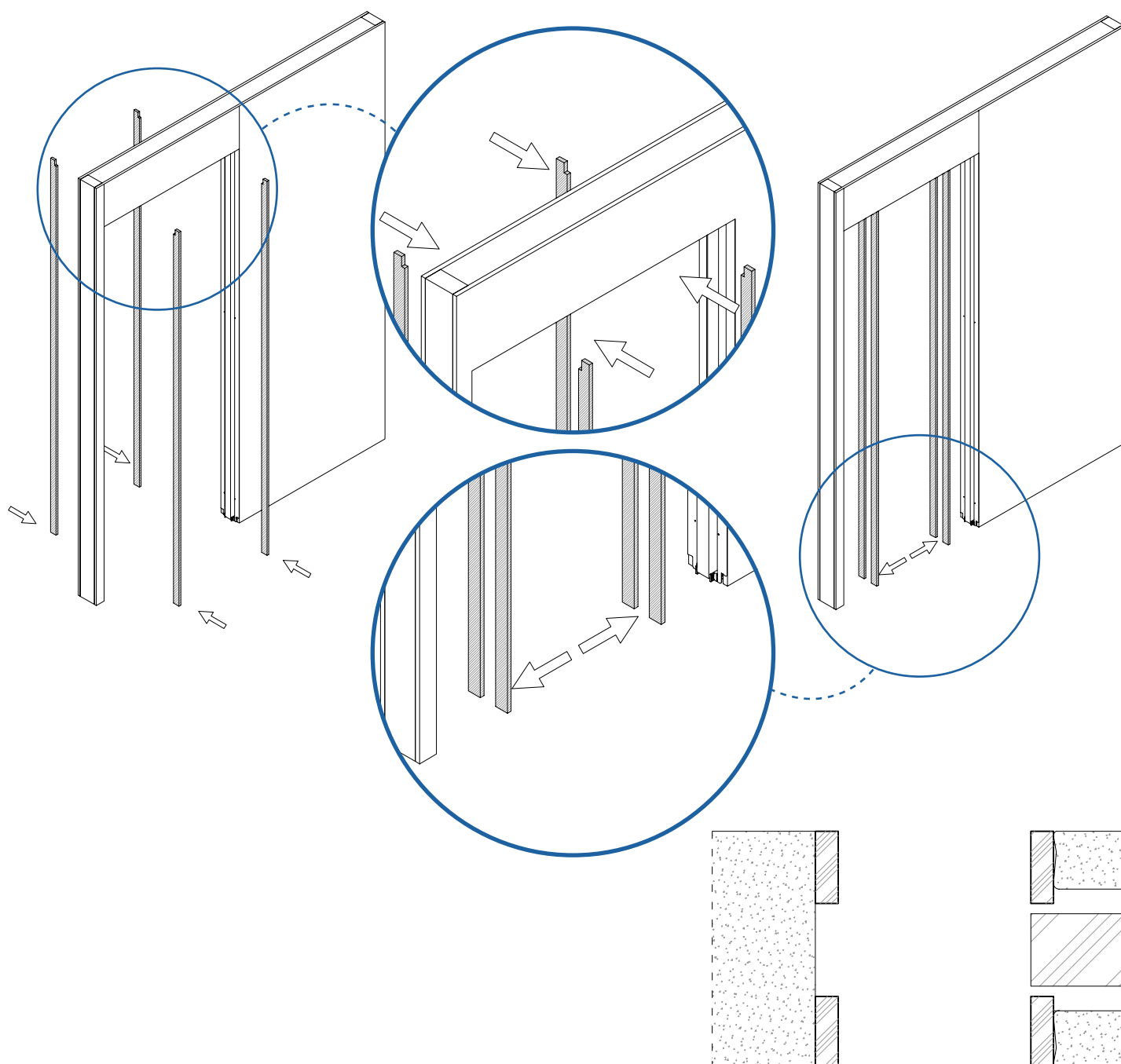
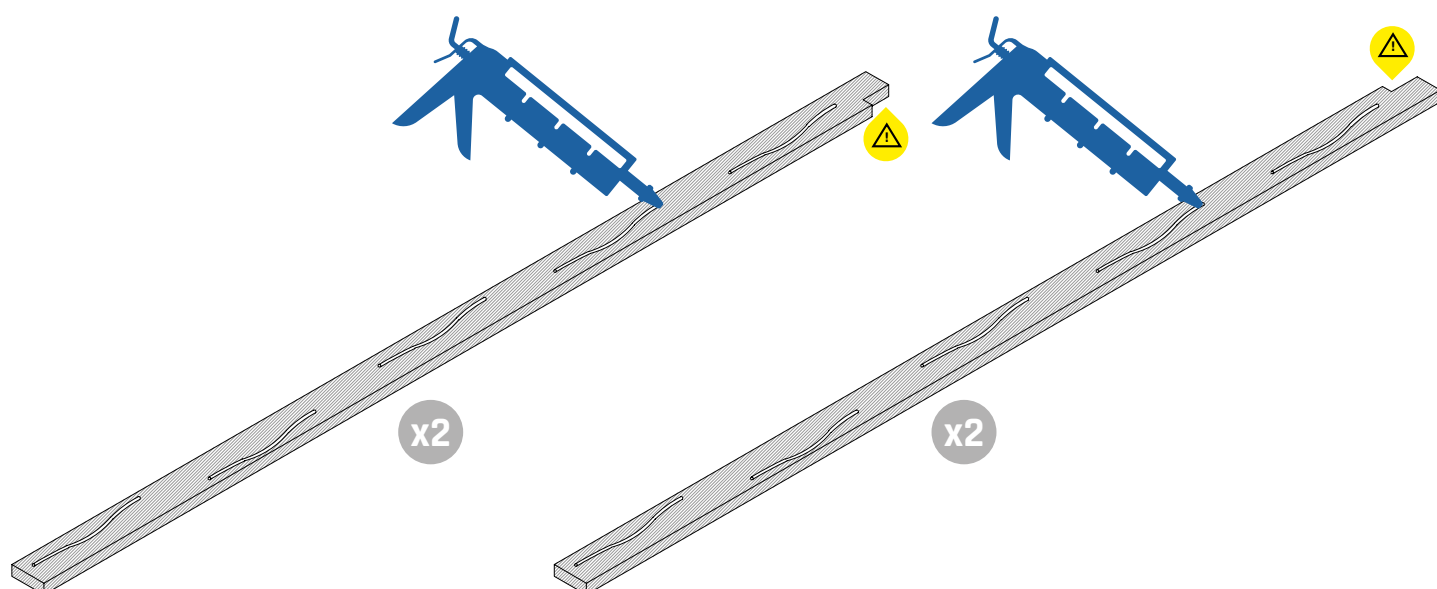
## JAMBS

ARCHITRAVES ARE NOT INCLUDED AS THE CHOICE IS AN INDIVIDUAL ONE. GET THE ROCKET DOOR LININGS AT [WWW.ROCKETDOORFRAMES.COM](http://WWW.ROCKETDOORFRAMES.COM)

..OTHERWISE, HERE IS A QUICK AND EASY SOLUTION FOR 1" 3/8 DOOR

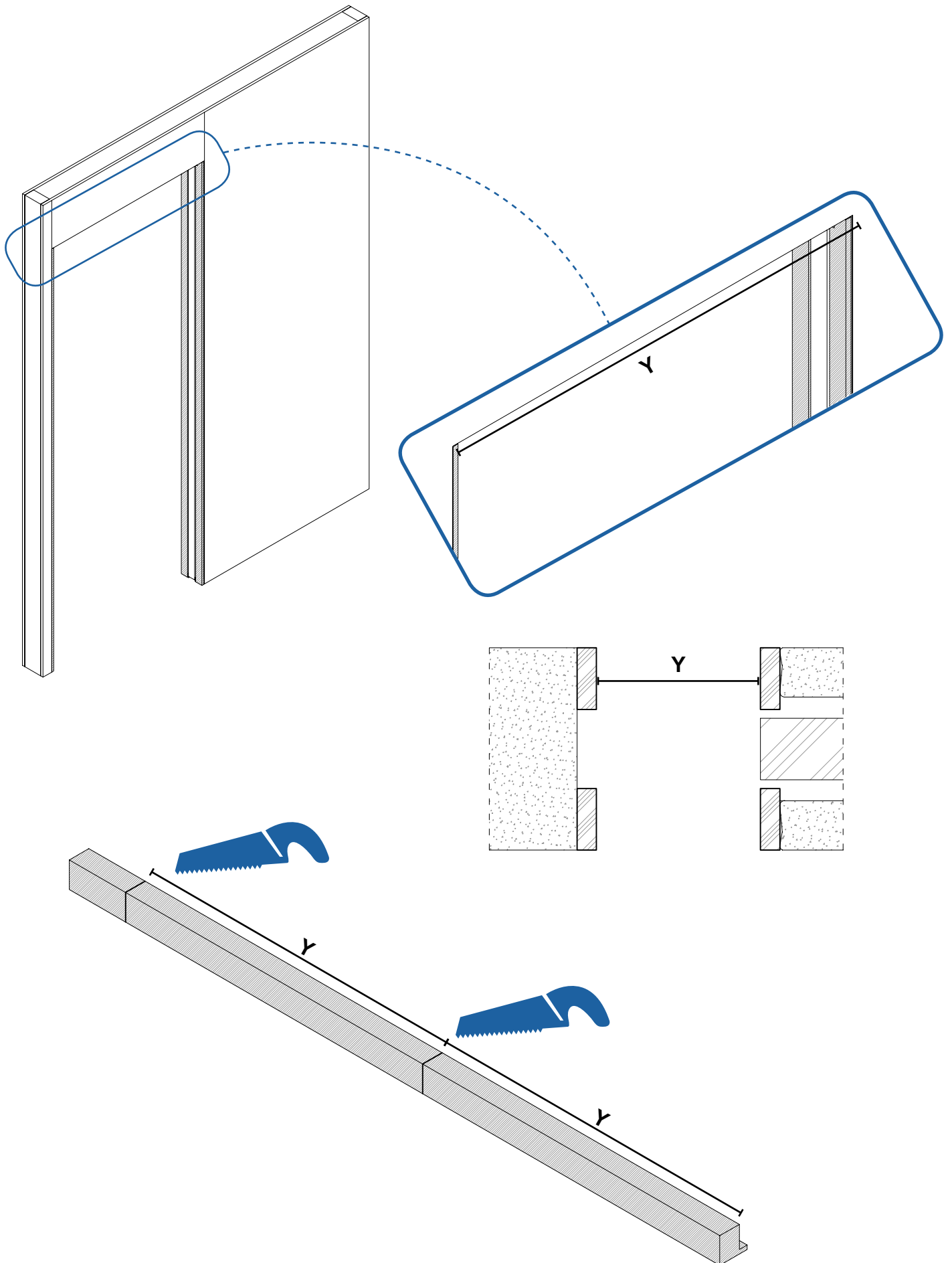


## JAMBS

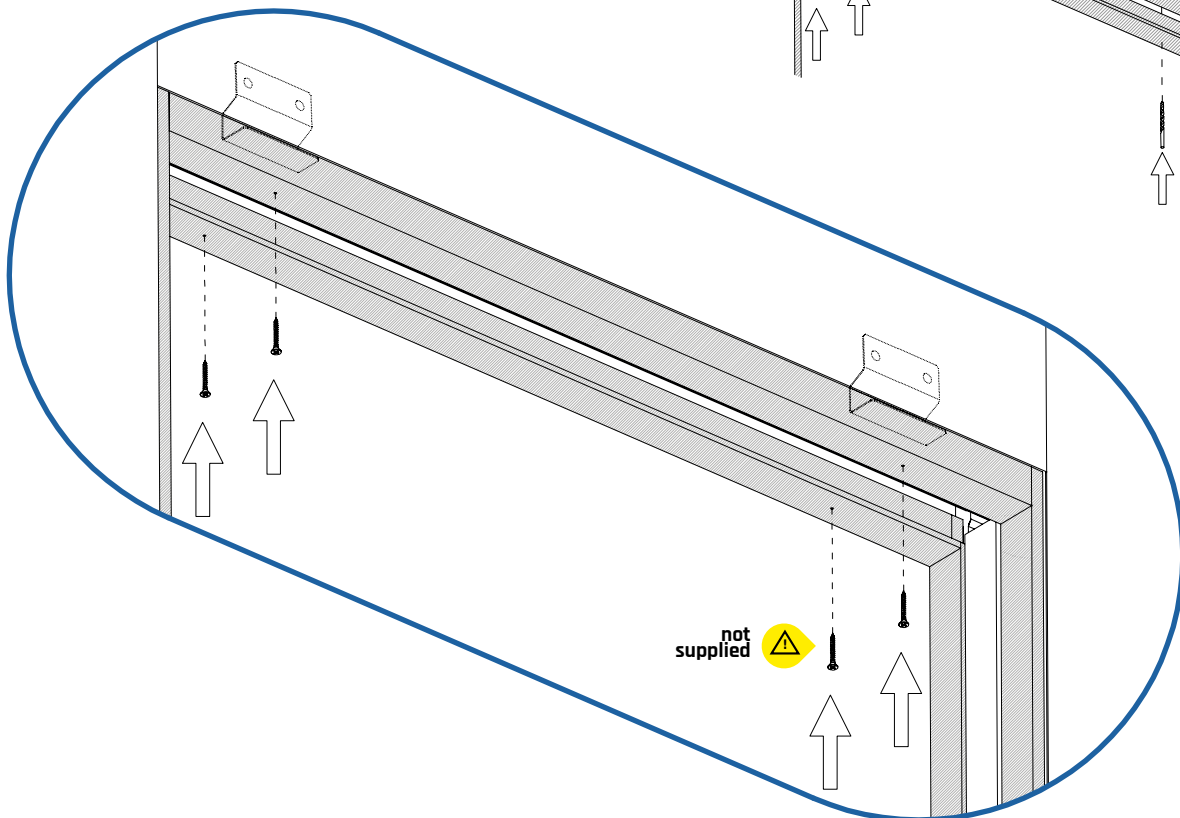
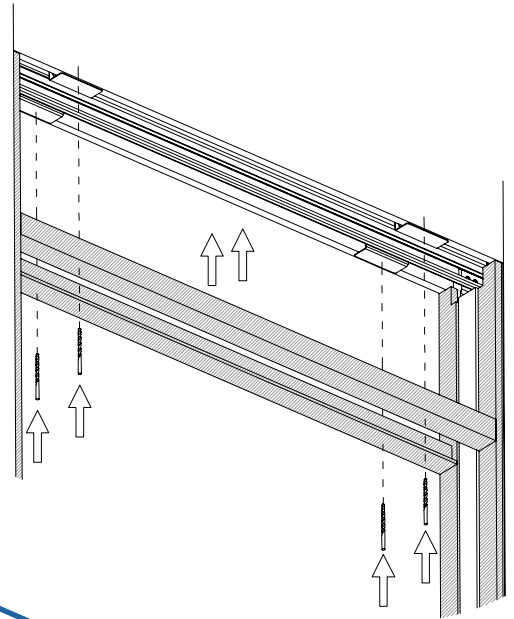
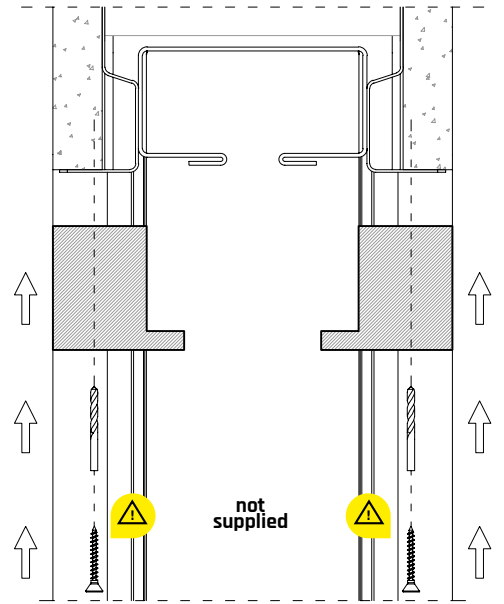
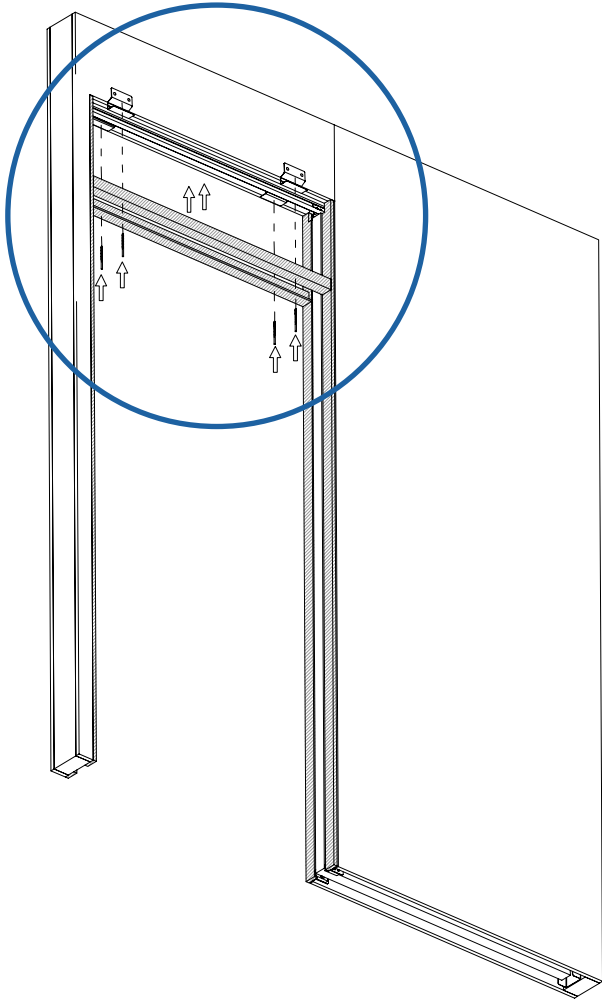


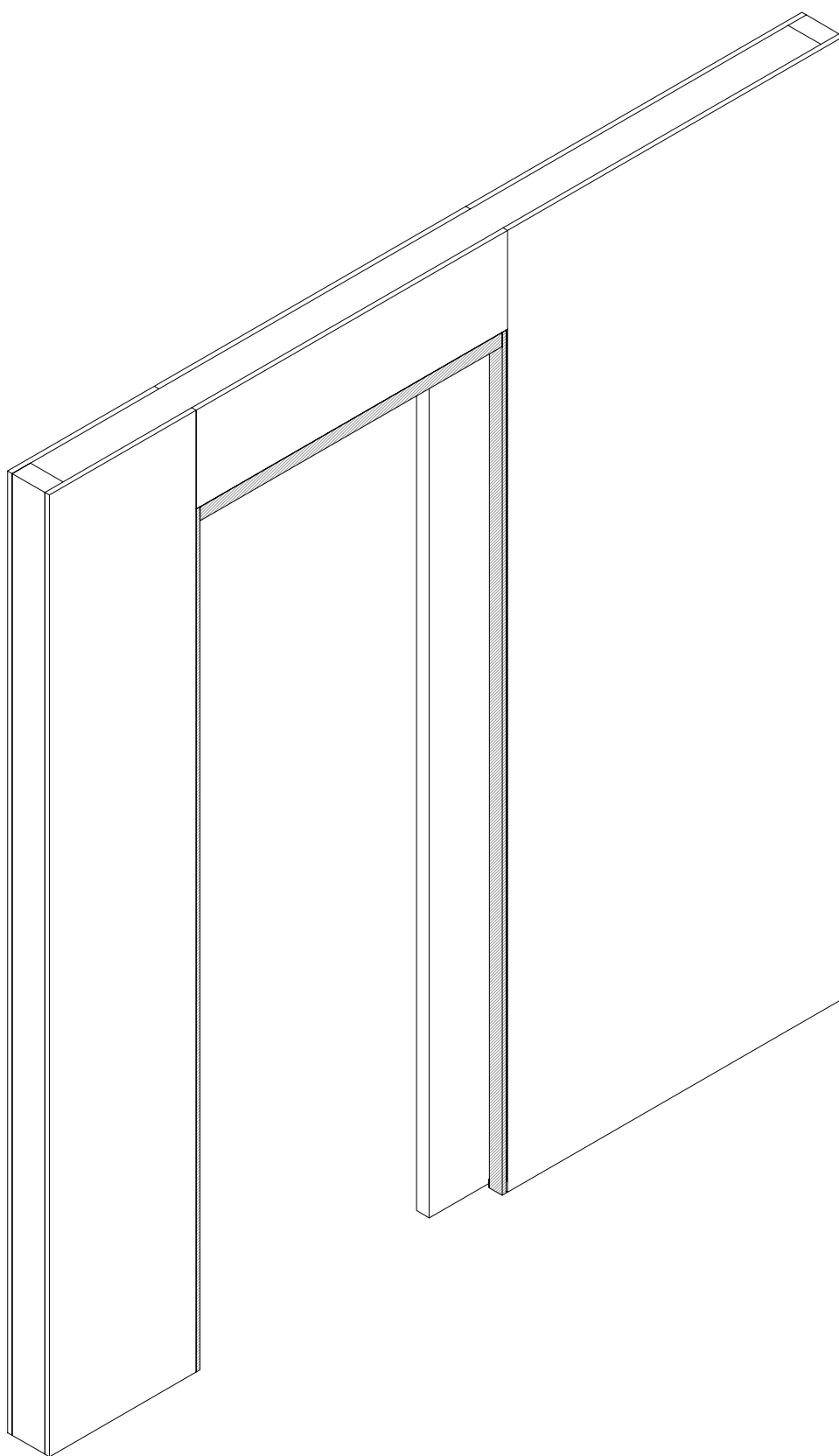


## JAMBS



## JAMBS





**WANT TO SEE  
HOW IT'S DONE?**



**GO TO [WWW.ROCKETDOORFRAMES.COM](http://WWW.ROCKETDOORFRAMES.COM) TO SEE AN INSTALLATION VIDEO**